

**2014 Winneshiek County, Iowa**  
Horizontal Datum: **NAD 83(2011)** - Vertical Datum: **NAVD 1988**  
Iowa North Zone (1401)  
Iowa Regional Coordinate System Zone 2 Mason City  
US Survey Feet

Point Name: **10161**

NAD 83(2011)      Latitude: **N43°10'09.14503"**      Longitude: **W92°00'46.05573"**

NAVD 88 Ortho Height: **1174.430sft**      Ellip. Ht: **1074.590sft**      **Geoid12A**

Mapping Angle: **1°00'29"**      Combination Scale Factor: **0.9999323791**

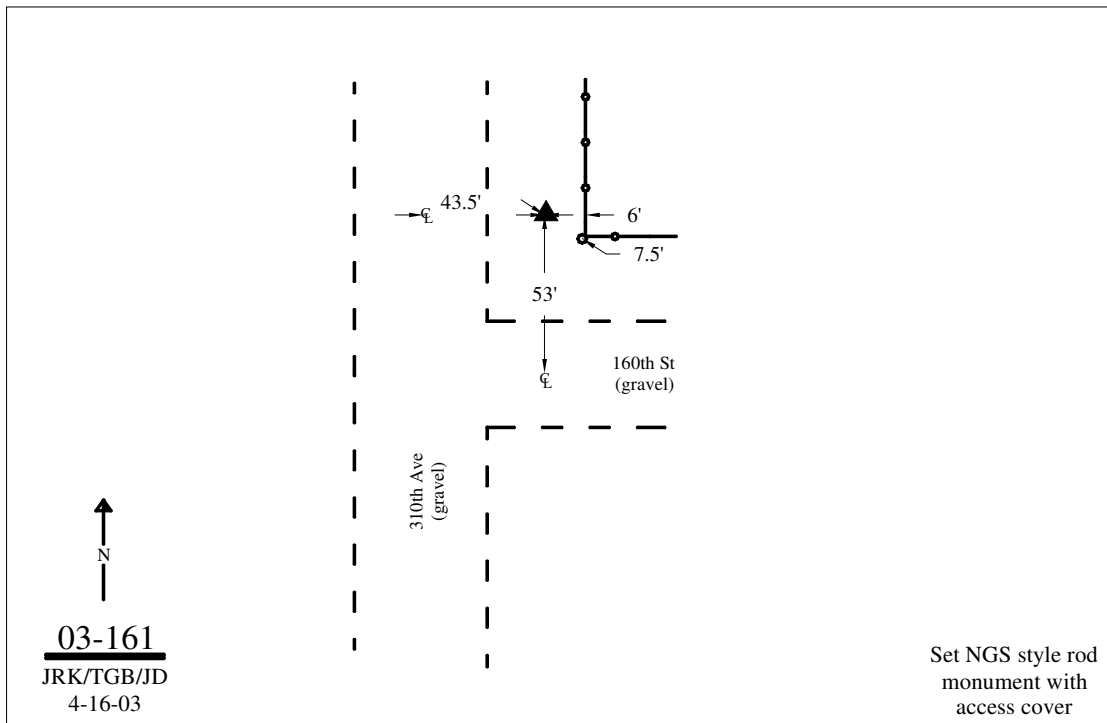
Iowa North Zone (1401)      Northing: **3892637.703sft**      Easting: **5317990.567sft**

IaRCS Zone 2      Northing: **9801791.589sft**      Easting: **12696683.139sft**

**Location:** Near the S 1/4 Cor of Sec 34 T97N R10W.

**Designation:** WINNESHIEK COUNTY GPS CONTROL PT 2003-161

**Monument Type:** 5/8" dia driven aluminum rod with a 2-1/2" dia aluminum cap and permanent magnet encased in a 5" dia PVC pipe with an aluminum access cover.



*This document was prepared by DCI on February 7, 2014 for use by Winneshiek County, Iowa*