

**2014 Winneshiek County, Iowa**  
Horizontal Datum: **NAD 83(2011)** - Vertical Datum: **NAVD 1988**  
Iowa North Zone (1401)  
Iowa Regional Coordinate System Zone 2 Mason City  
US Survey Feet

Point Name: **10164**

NAD 83(2011)      Latitude: **N43°10'06.19585"**      Longitude: **W91°51'10.81779"**

NAVD 88 Ortho Height: **1197.940sft**      Ellip. Ht: **1098.283sft**      **Geoid12A**

Mapping Angle: **1°06'58"**      Combination Scale Factor: **0.9999311237**

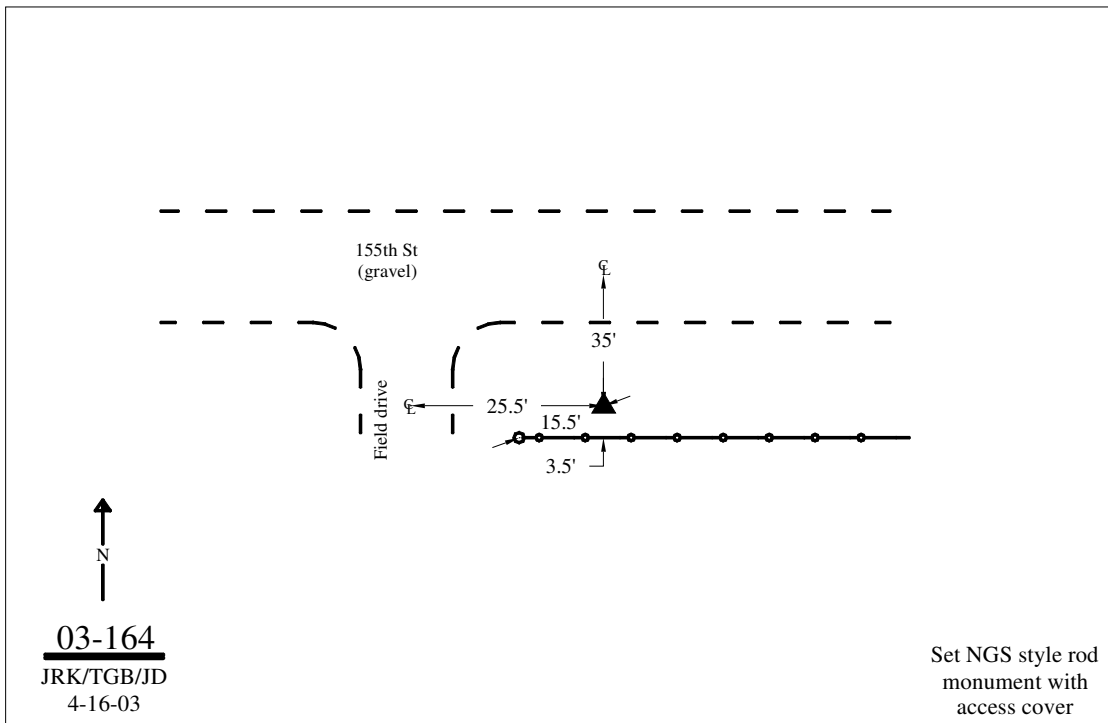
Iowa North Zone (1401)      Northing: **3893129.335sft**      Easting: **5360617.813sft**

IaRCS Zone 2      Northing: **9801908.918sft**      Easting: **12739315.591sft**

**Location:** Near the N 1/4 Cor of Sec 1 T96N R9W.

**Designation:** WINNESHIEK COUNTY GPS CONTROL PT 2003-164

**Monument Type:** 5/8" dia driven aluminum rod with a 2-1/2" dia aluminum cap and permanent magnet encased in a 5" dia PVC pipe with an aluminum access cover.



*This document was prepared by DCI on February 7, 2014 for use by Winneshiek County, Iowa*