

2014 Winneshiek County, Iowa
Horizontal Datum: **NAD 83(2011)** - Vertical Datum: **NAVD 1988**
Iowa North Zone (1401)
Iowa Regional Coordinate System Zone 2 Mason City
US Survey Feet

Point Name: **10165**

NAD 83(2011) Latitude: **N43°10'04.66958"** Longitude: **W91°47'03.07264"**

NAVD 88 Ortho Height: **1273.830sft** Ellip. Ht: **1174.325sft** **Geoid12A**

Mapping Angle: **1°09'46"** Combination Scale Factor: **0.9999274312**

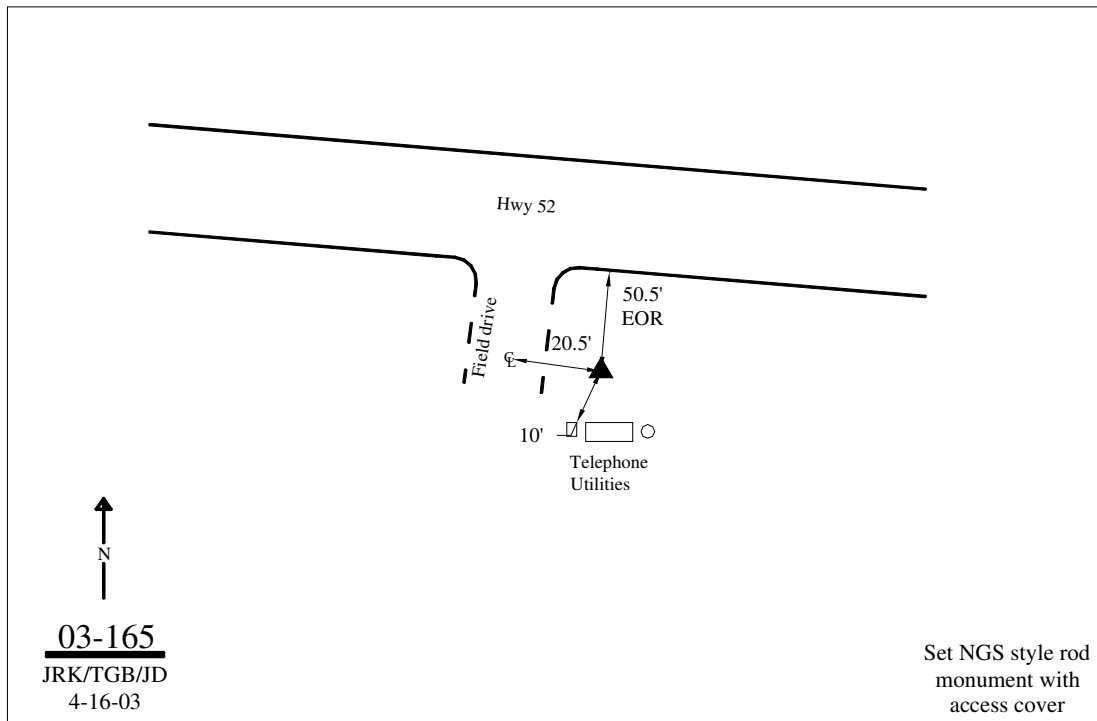
Iowa North Zone (1401) Northing: **3893339.975sft** Easting: **5378977.038sft**

IaRCS Zone 2 Northing: **9801958.581sft** Easting: **12757677.050sft**

Location: In the NW 1/4 of Sec 3 T96N R8W.

Designation: WINNESHIEK COUNTY GPS CONTROL PT 2003-165

Monument Type: 5/8" dia driven aluminum rod with a 2-1/2" dia aluminum cap and permanent magnet encased in a 5" dia PVC pipe with an aluminum access cover.



This document was prepared by DCI on February 7, 2014 for use by Winneshiek County, Iowa