

2014 Winneshiek County, Iowa
Horizontal Datum: **NAD 83(2011)** - Vertical Datum: **NAVD 1988**
Iowa North Zone (1401)
Iowa Regional Coordinate System Zone 2 Mason City
US Survey Feet

Point Name: **10166**

NAD 83(2011) Latitude: **N43°10'08.32063"** Longitude: **W91°43'05.05727"**

NAVD 88 Ortho Height: **1201.300sft** Ellip. Ht: **1101.813sft** **Geoid12A**

Mapping Angle: **1°12'28"** Combination Scale Factor: **0.9999310454**

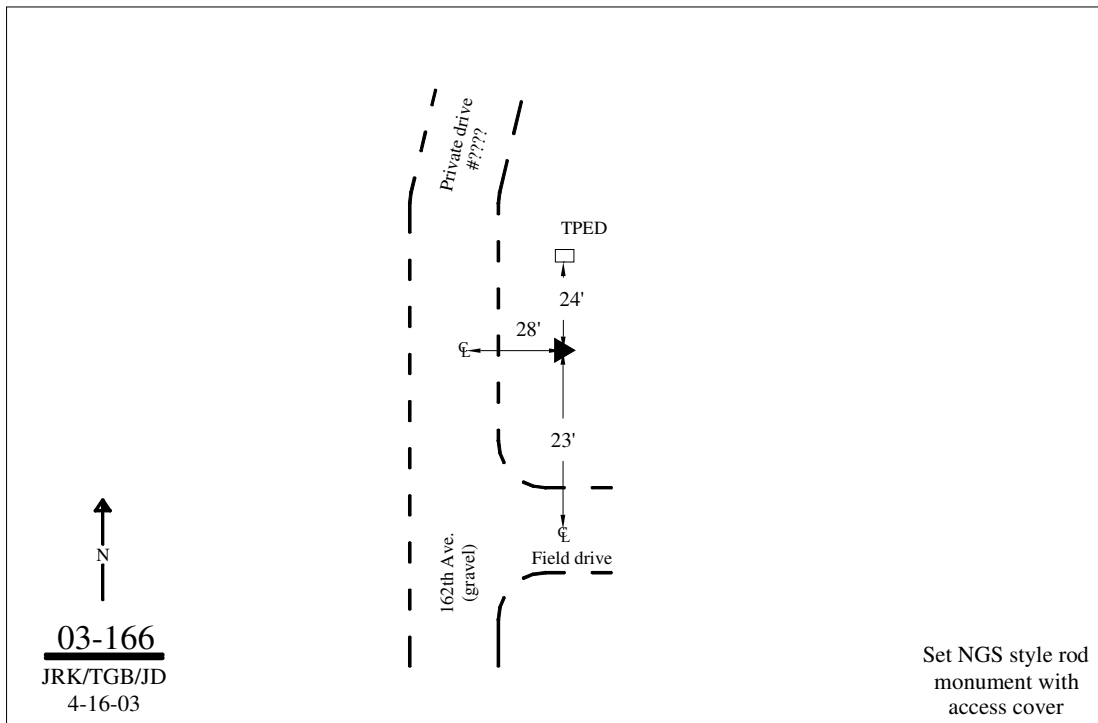
Iowa North Zone (1401) Northing: **3894074.414sft** Easting: **5396604.266sft**

IaRCS Zone 2 Northing: **9802538.606sft** Easting: **12775311.085sft**

Location: In the NW 1/4 of Sec 6 T96N R7W.

Designation: WINNESHIEK COUNTY GPS CONTROL PT 2003-166

Monument Type: 5/8" dia driven aluminum rod with a 2-1/2" dia aluminum cap and permanent magnet encased in a 5" dia PVC pipe with an aluminum access cover.



This document was prepared by DCI on February 7, 2014 for use by Winneshiek County, Iowa