

**2014 Winneshiek County, Iowa**  
Horizontal Datum: **NAD 83(2011)** - Vertical Datum: **NAVD 1988**  
Iowa North Zone (1401)  
Iowa Regional Coordinate System Zone 2 Mason City  
US Survey Feet

Point Name: **10169**

NAD 83(2011)      Latitude: **N43°07'35.07492"**      Longitude: **W91°57'52.25807"**

NAVD 88 Ortho Height: **1075.080sft**      Ellip. Ht: **975.089sft**      **Geoid12A**

Mapping Angle: **1°02'26"**      Combination Scale Factor: **0.9999308645**

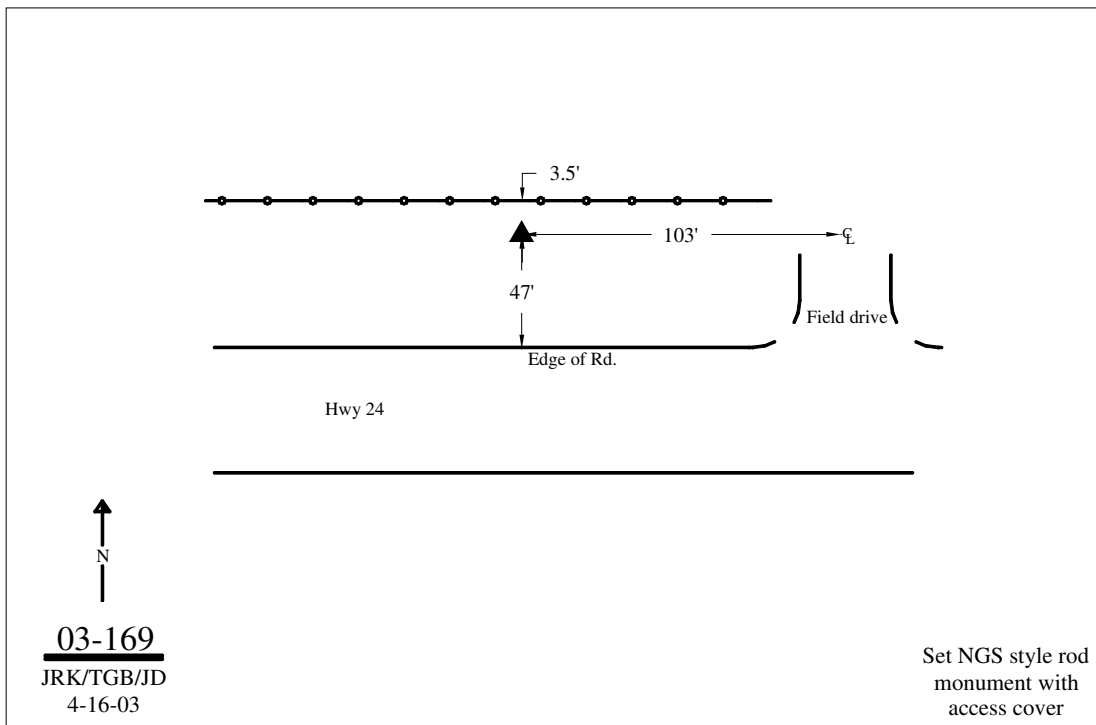
Iowa North Zone (1401)      Northing: **3877271.813sft**      Easting: **5331151.316sft**

IaRCS Zone 2      Northing: **9786309.683sft**      Easting: **12709709.179sft**

**Location:** Near the SE Cor of Sec 13 T96N R10W.

**Designation:** WINNESHIEK COUNTY GPS CONTROL PT 2003-169

**Monument Type:** 5/8" dia driven aluminum rod with a 2-1/2" dia aluminum cap and permanent magnet encased in a 5" dia PVC pipe with an aluminum access cover.



*This document was prepared by DCI on February 7, 2014 for use by Winneshiek County, Iowa*