

**2014 Winneshiek County, Iowa**  
Horizontal Datum: **NAD 83(2011)** - Vertical Datum: **NAVD 1988**  
Iowa North Zone (1401)  
Iowa Regional Coordinate System Zone 2 Mason City  
US Survey Feet

Point Name: **10170**

NAD 83(2011)      Latitude: **N43°07'46.09750"**      Longitude: **W91°54'12.88799"**

NAVD 88 Ortho Height: **1003.180sft**      Ellip. Ht: **903.217sft**      **Geoid12A**

Mapping Angle: **1°04'55"**      Combination Scale Factor: **0.9999347228**

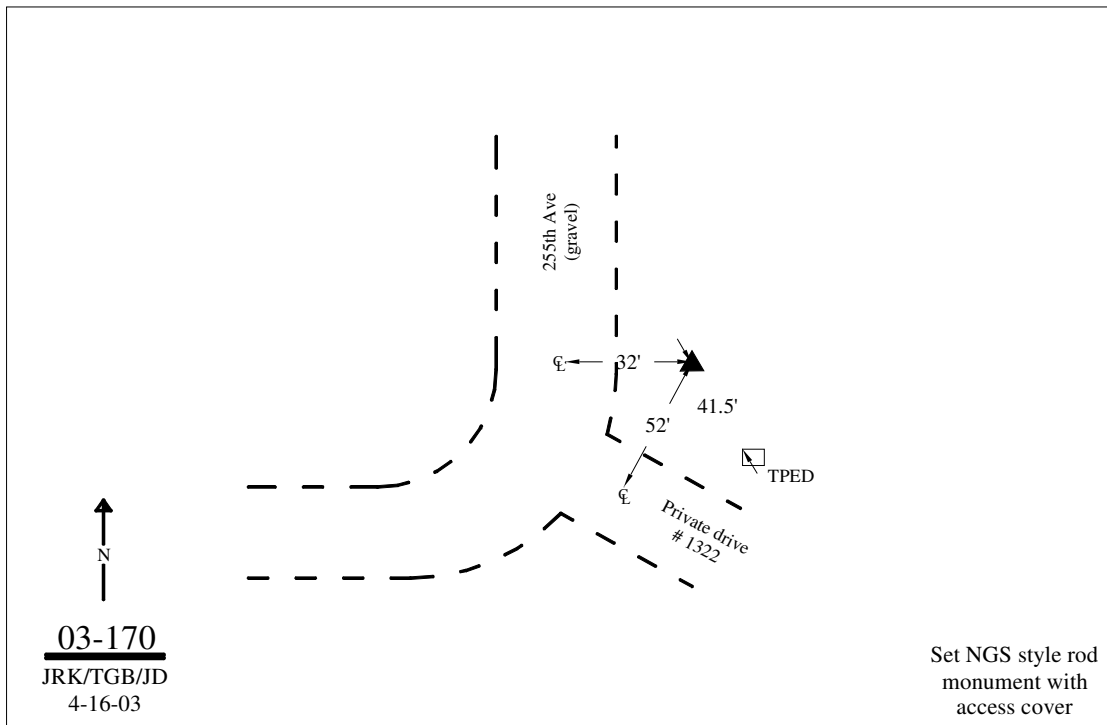
Iowa North Zone (1401)      Northing: **3878688.900sft**      Easting: **5347395.402sft**

IaRCS Zone 2      Northing: **9787584.164sft**      Easting: **12725966.149sft**

**Location:** In the SW 1/4 of Sec 15 T96N R9W.

**Designation:** WINNESHIEK COUNTY GPS CONTROL PT 2003-170

**Monument Type:** 5/8" dia driven aluminum rod with a 2-1/2" dia aluminum cap and permanent magnet encased in a 5" dia PVC pipe with an aluminum access cover.



*This document was prepared by DCI on February 7, 2014 for use by Winneshiek County, Iowa*