

**2014 Winneshiek County, Iowa**  
Horizontal Datum: **NAD 83(2011)** - Vertical Datum: **NAVD 1988**  
Iowa North Zone (1401)  
Iowa Regional Coordinate System Zone 2 Mason City  
US Survey Feet

Point Name: **10172**

NAD 83(2011)      Latitude: **N43°07'26.96612"**      Longitude: **W91°47'04.41613"**

NAVD 88 Ortho Height: **1217.990sft**      Ellip. Ht: **1118.170sft**      **Geoid12A**

Mapping Angle: **1°09'45"**      Combination Scale Factor: **0.9999237244**

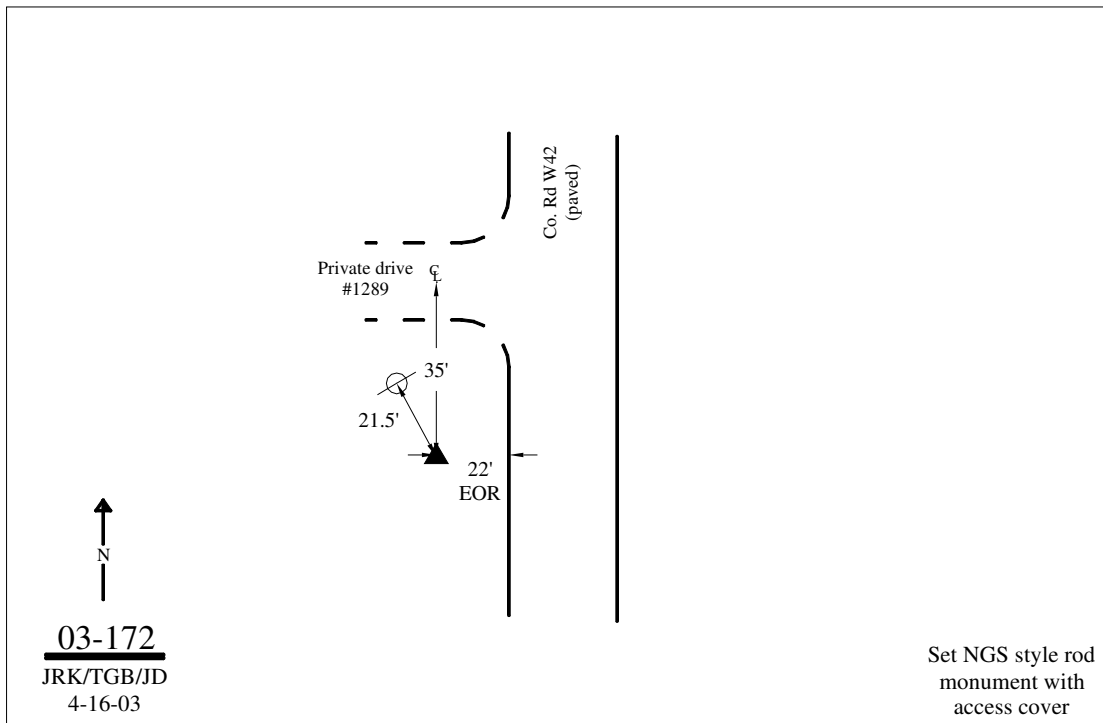
Iowa North Zone (1401)      Northing: **3877374.691sft**      Easting: **5379201.462sft**

IaRCS Zone 2      Northing: **9785990.940sft**      Easting: **12757761.550sft**

**Location:** Near the NE Cor of Sec 21 T96N R8W.

**Designation:** WINNESHIEK COUNTY GPS CONTROL PT 2003-172

**Monument Type:** 5/8" dia driven aluminum rod with a 2-1/2" dia aluminum cap and permanent magnet encased in a 5" dia PVC pipe with an aluminum access cover.



*This document was prepared by DCI on February 7, 2014 for use by Winneshiek County, Iowa*