

2014 Winneshiek County, Iowa
Horizontal Datum: **NAD 83(2011)** - Vertical Datum: **NAVD 1988**
Iowa North Zone (1401)
Iowa Regional Coordinate System Zone 2 Mason City
US Survey Feet

Point Name: **10174**

NAD 83(2011) Latitude: **N43°07'30.09180"** Longitude: **W91°39'50.66662"**

NAVD 88 Ortho Height: **1134.610sft** Ellip. Ht: **1034.719sft** **Geoid12A**

Mapping Angle: **1°14'39"** Combination Scale Factor: **0.9999278266**

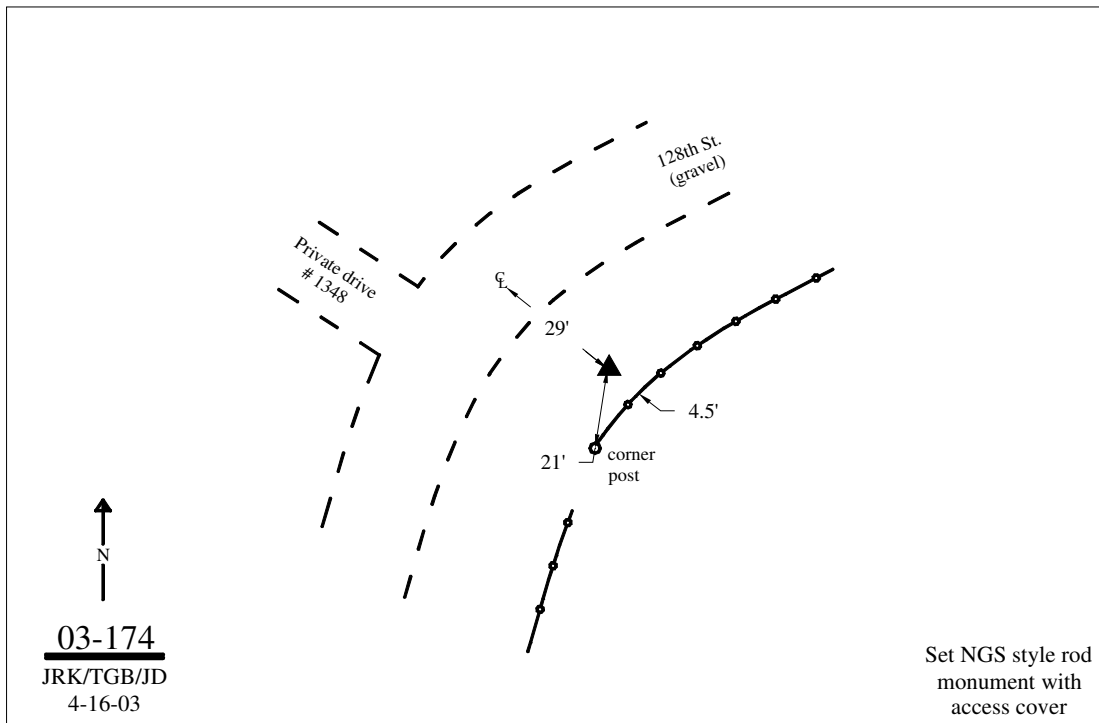
Iowa North Zone (1401) Northing: **3878366.667sft** Easting: **5411354.467sft**

IaRCS Zone 2 Northing: **9786701.350sft** Easting: **12789924.136sft**

Location: Near the NW Cor of Sec 22 T96N R7W.

Designation: WINNESHIEK COUNTY GPS CONTROL PT 2003-174

Monument Type: 5/8" dia driven aluminum rod with a 2-1/2" dia aluminum cap and permanent magnet encased in a 5" dia PVC pipe with an aluminum access cover.



This document was prepared by DCI on February 7, 2014 for use by Winneshiek County, Iowa