

2014 Winneshiek County, Iowa

Horizontal Datum: **NAD 83(2011)** - Vertical Datum: **NAVD 1988**

Iowa North Zone (1401)

Iowa Regional Coordinate System Zone 2 Mason City

US Survey Feet

Point Name: **10265**

NAD 83(2011) Latitude: **N43°12'45.52095"** Longitude: **W92°04'52.47419"**

NAVD 88 Ortho Height: **1143.660sft** Ellip. Ht: **1043.921sft** **Geoid12A**

Mapping Angle: **0°57'42"** Combination Scale Factor: **0.9999407707**

Iowa North Zone (1401) Northing: **3908154.009sft** Easting: **5299466.412sft**

IaRCS Zone 2 Northing: **9817471.062sft** Easting: **12678295.108sft**

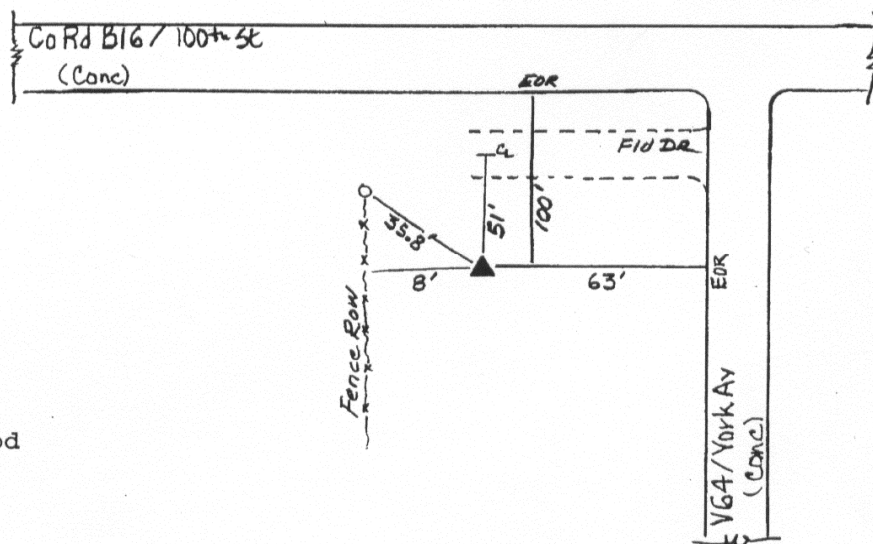
Location: Near the NE Cor of Sec 24 T97N R11W.

Designation: CHICKASAW COUNTY GPS CONTROL PT 2000-265

Monument Type: 5/8" dia driven aluminum rod with a 2-1/2" dia aluminum cap and permanent magnet encased in a 5" dia PVC pipe with an aluminum access cover.

4
N
Oct 2000

265



Set NGS style rod
monument with
aluminum access
cover.

This document was prepared by DCI on February 7, 2014 for use by Winneshiek County, Iowa