

**2014 Winneshiek County, Iowa**  
Horizontal Datum: **NAD 83(2011)** - Vertical Datum: **NAVD 1988**  
Iowa North Zone (1401)  
Iowa Regional Coordinate System Zone 2 Mason City  
US Survey Feet

Point Name: **10267**

NAD 83(2011)      Latitude: **N43°07'35.50748"**      Longitude: **W92°04'51.82072"**

NAVD 88 Ortho Height: **1152.090sft**      Ellip. Ht: **1051.992sft**      **Geoid12A**

Mapping Angle: **0°57'42"**      Combination Scale Factor: **0.9999272125**

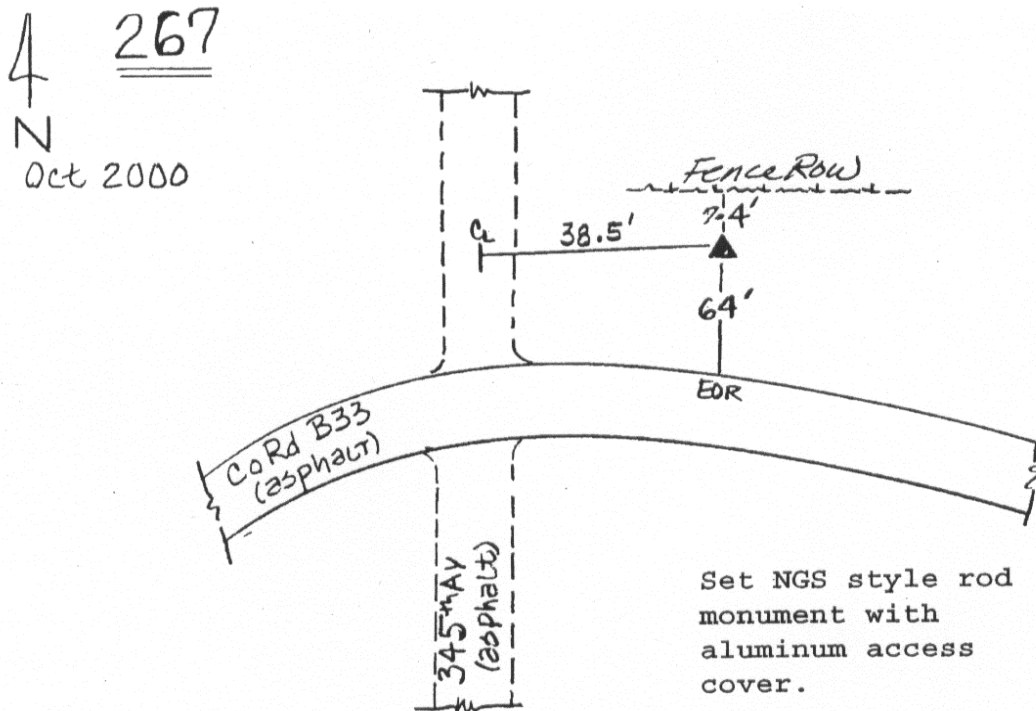
Iowa North Zone (1401)      Northing: **3876771.955sft**      Easting: **5300041.591sft**

IaRCS Zone 2      Northing: **9786083.302sft**      Easting: **12678594.213sft**

**Location:** Near the SW Cor of Sec 18 T96N R10W.

**Designation:** CHICKASAW COUNTY GPS CONTROL PT 2000-267

**Monument Type:** 5/8" dia driven aluminum rod with a 2-1/2" dia aluminum cap and permanent magnet encased in a 5" dia PVC pipe with an aluminum access cover.



*This document was prepared by DCI on February 7, 2014 for use by Winneshiek County, Iowa*