

2014 Winneshiek County, Iowa

Horizontal Datum: **NAD 83(2011)** - Vertical Datum: **NAVD 1988**

Iowa North Zone (1401)

Iowa Regional Coordinate System Zone 2 Mason City

US Survey Feet

Point Name: **10268**

NAD 83(2011) Latitude: **N43°04'41.14982"** Longitude: **W92°04'53.19457"**

NAVD 88 Ortho Height: **1123.430sft** Ellip. Ht: **1023.107sft** **Geoid12A**

Mapping Angle: **0°57'41"** Combination Scale Factor: **0.9999221783**

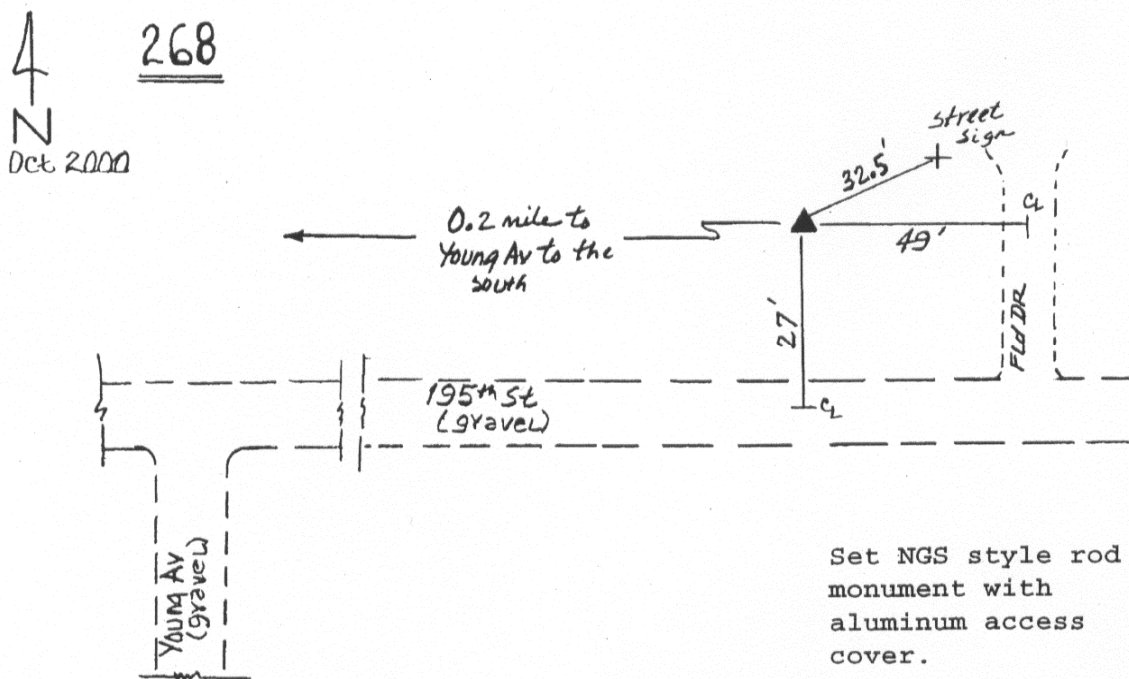
Iowa North Zone (1401) Northing: **3859120.284sft** Easting: **5300235.917sft**

IaRCS Zone 2 Northing: **9768429.377sft** Easting: **12678633.251sft**

Location: Near the NE 1/4 of Sec 1 T95N R11W.

Designation: CHICKASAW COUNTY GPS CONTROL PT 2000-268

Monument Type: 5/8" dia driven aluminum rod with a 2-1/2" dia aluminum cap and permanent magnet encased in a 5" dia PVC pipe with an aluminum access cover.



This document was prepared by DCI on February 7, 2014 for use by Winneshiek County, Iowa