

2014 Winneshiek County, Iowa
Horizontal Datum: **NAD 83(2011)** - Vertical Datum: **NAVD 1988**
Iowa North Zone (1401)
Iowa Regional Coordinate System Zone 2 Mason City
US Survey Feet

Point Name: **10302**

NAD 83(2011) Latitude: **N43°04'57.43709"** Longitude: **W91°57'59.58512"**

NAVD 88 Ortho Height: **1190.370sft** Ellip. Ht: **1090.236sft** **Geoid12A**

Mapping Angle: **1°02'21"** Combination Scale Factor: **0.9999195444**

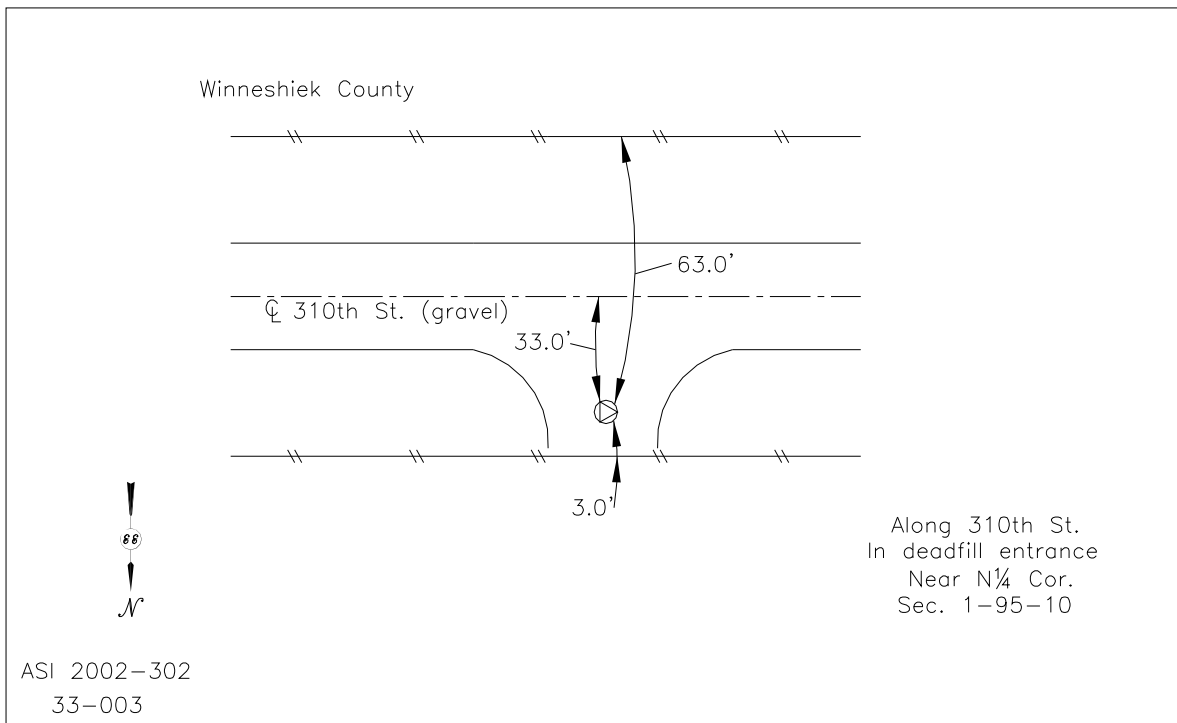
Iowa North Zone (1401) Northing: **3861304.880sft** Easting: **5330897.526sft**

IaRCS Zone 2 Northing: **9770344.491sft** Easting: **12709315.114sft**

Location: Near the S 1/4 Cor of Sec 36 T96N R10W.

Designation: FAYETTE COUNTY GPS CONTROL PT 2003-302

Monument Type: 5/8" dia driven aluminum rod with a 2-1/2" dia aluminum cap and permanent magnet encased in a 5" dia PVC pipe with an aluminum access cover.



This document was prepared by DCI on February 7, 2014 for use by Winneshiek County, Iowa