

2014 Winneshiek County, Iowa
Horizontal Datum: **NAD 83(2011)** - Vertical Datum: **NAVD 1988**
Iowa North Zone (1401)
Iowa Regional Coordinate System Zone 2 Mason City
US Survey Feet

Point Name: **10303**

NAD 83(2011) Latitude: **N43°05'01.17311"** Longitude: **W91°54'14.32224"**

NAVD 88 Ortho Height: **1028.890sft** Ellip. Ht: **928.774sft** **Geoid12A**

Mapping Angle: **1°04'54"** Combination Scale Factor: **0.9999273787**

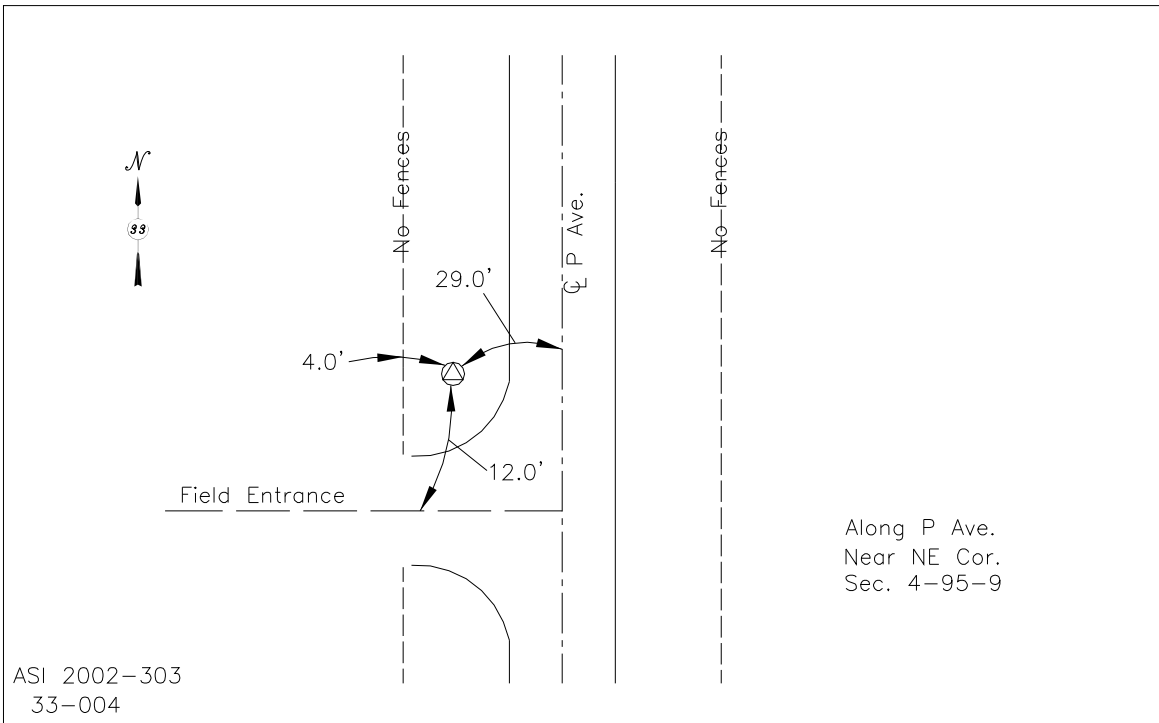
Iowa North Zone (1401) Northing: **3861992.449sft** Easting: **5347604.280sft**

IaRCS Zone 2 Northing: **9770885.373sft** Easting: **12726028.472sft**

Location: In the SE 1/4 of Sec 33 T96N R9W.

Designation: FAYETTE COUNTY GPS CONTROL PT 2003-303

Monument Type: 5/8" dia driven aluminum rod with a 2-1/2" dia aluminum cap and permanent magnet encased in a 5" dia PVC pipe with an aluminum access cover.



This document was prepared by DCI on February 7, 2014 for use by Winneshiek County, Iowa