

2014 Winneshiek County, Iowa
Horizontal Datum: **NAD 83(2011)** - Vertical Datum: **NAVD 1988**
Iowa North Zone (1401)
Iowa Regional Coordinate System Zone 2 Mason City
US Survey Feet

Point Name: **10304**

NAD 83(2011) Latitude: **N43°04'54.48946"** Longitude: **W91°50'37.73689"**

NAVD 88 Ortho Height: **1092.850sft** Ellip. Ht: **992.775sft** **Geoid12A**

Mapping Angle: **1°07'21"** Combination Scale Factor: **0.9999240907**

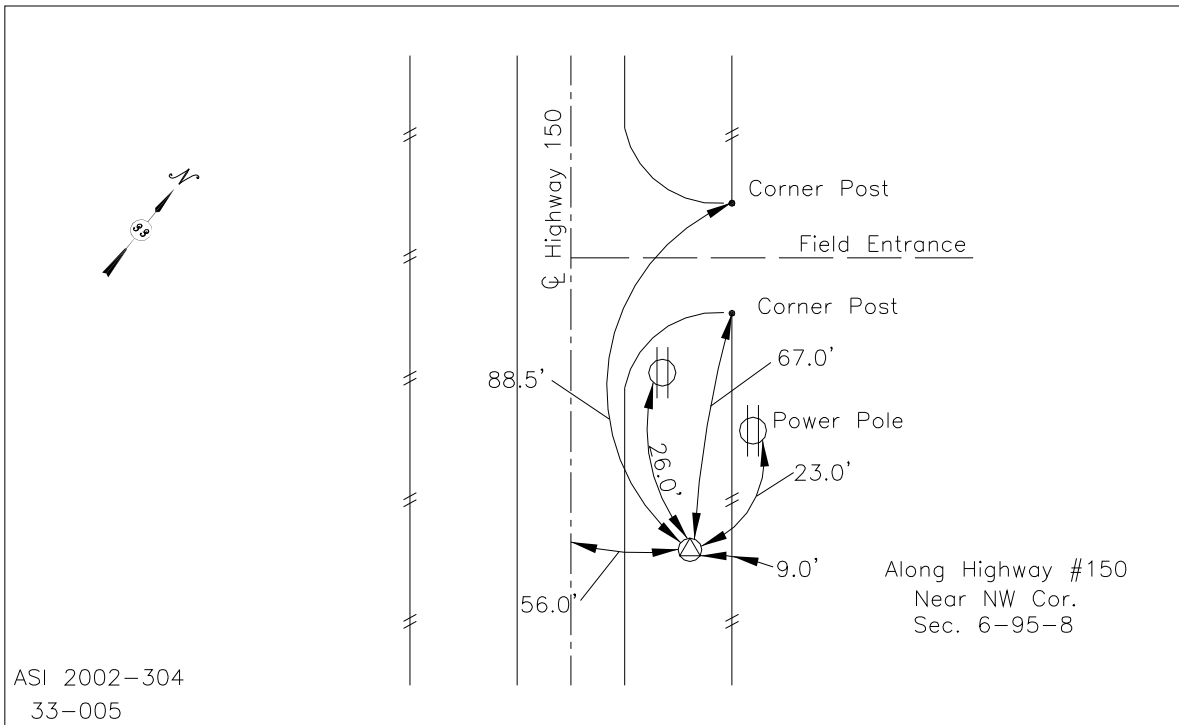
Iowa North Zone (1401) Northing: **3861625.048sft** Easting: **5363687.092sft**

IaRCS Zone 2 Northing: **9770376.838sft** Easting: **12742108.607sft**

Location: In the SW 1/4 of Sec 31 T96N R8W.

Designation: FAYETTE COUNTY GPS CONTROL PT 2003-304

Monument Type: 5/8" dia driven aluminum rod with a 2-1/2" dia aluminum cap and permanent magnet encased in a 5" dia PVC pipe with an aluminum access cover.



This document was prepared by DCI on February 7, 2014 for use by Winneshiek County, Iowa