

2014 Winneshiek County, Iowa
Horizontal Datum: **NAD 83(2011)** - Vertical Datum: **NAVD 1988**
Iowa North Zone (1401)
Iowa Regional Coordinate System Zone 2 Mason City
US Survey Feet

Point Name: **10305**

NAD 83(2011) Latitude: **N43°04'55.08778"** Longitude: **W91°46'14.44754"**

NAVD 88 Ortho Height: **1163.790sft** Ellip. Ht: **1063.734sft** **Geoid12A**

Mapping Angle: **1°10'19"** Combination Scale Factor: **0.9999207263**

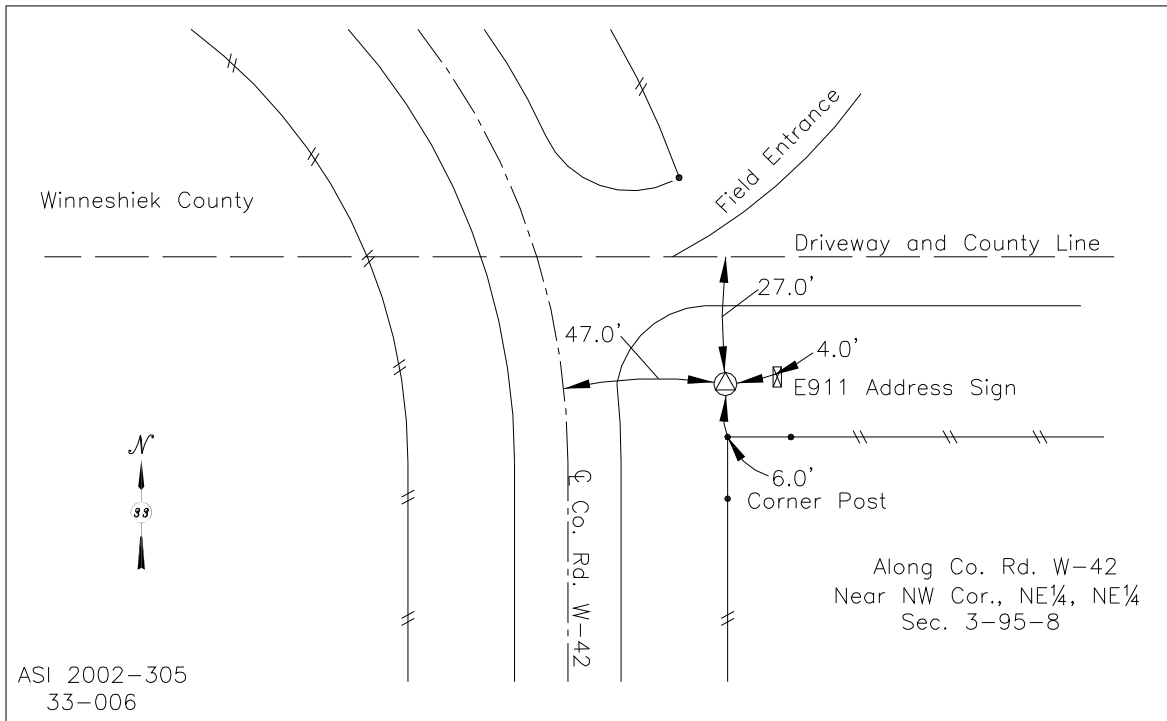
Iowa North Zone (1401) Northing: **3862076.819sft** Easting: **5383220.896sft**

IaRCS Zone 2 Northing: **9770657.368sft** Easting: **12761647.040sft**

Location: In the SE 1/4 of Sec 34 T96N R8W.

Designation: FAYETTE COUNTY GPS CONTROL PT 2003-305

Monument Type: 5/8" dia driven aluminum rod with a 3-1/2" dia aluminum cap and permanent magnet encased in a 5" dia PVC pipe with an aluminum access cover.



This document was prepared by DCI on February 7, 2014 for use by Winneshiek County, Iowa