

2014 Winneshiek County, Iowa
Horizontal Datum: **NAD 83(2011)** - Vertical Datum: **NAVD 1988**
Iowa North Zone (1401)
Iowa Regional Coordinate System Zone 2 Mason City
US Survey Feet

Point Name: **10306**

NAD 83(2011) Latitude: **N43°04'54.66180"** Longitude: **W91°43'10.96884"**

NAVD 88 Ortho Height: **1185.280sft** Ellip. Ht: **1085.208sft** **Geoid12A**

Mapping Angle: **1°12'24"** Combination Scale Factor: **0.9999196869**

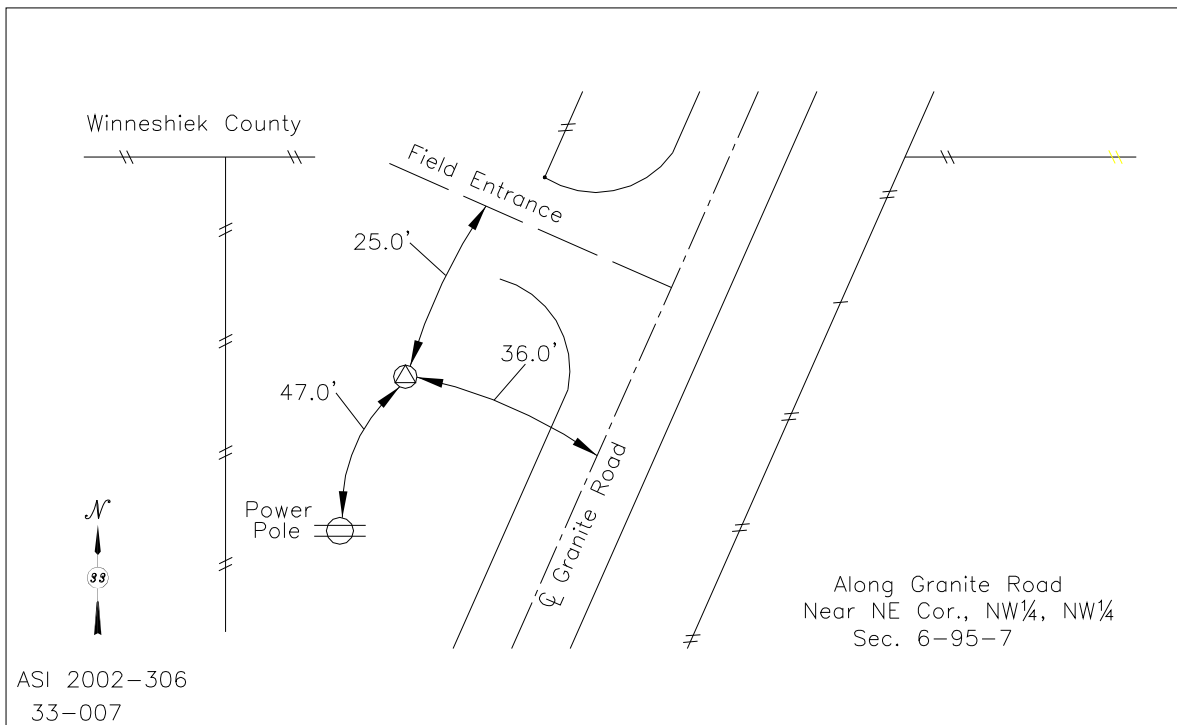
Iowa North Zone (1401) Northing: **3862316.315sft** Easting: **5396834.969sft**

IaRCS Zone 2 Northing: **9770777.608sft** Easting: **12775263.677sft**

Location: In the NW 1/4 of Sec 31 T96N R7W.

Designation: FAYETTE COUNTY GPS CONTROL PT 2003-306

Monument Type: 5/8" dia driven aluminum rod with a 3-1/2" dia aluminum cap and permanent magnet encased in a 5" dia PVC pipe with an aluminum access cover.



This document was prepared by DCI on February 7, 2014 for use by Winneshiek County, Iowa