

2014 Winneshiek County, Iowa
Horizontal Datum: **NAD 83(2011)** - Vertical Datum: **NAVD 1988**
Iowa North Zone (1401)
Iowa Regional Coordinate System Zone 2 Mason City
US Survey Feet

Point Name: **10307**

NAD 83(2011) Latitude: **N43°04'54.20711"** Longitude: **W91°39'54.33429"**

NAVD 88 Ortho Height: **1171.360sft** Ellip. Ht: **1071.199sft** **Geoid12A**

Mapping Angle: **1°14'37"** Combination Scale Factor: **0.9999203393**

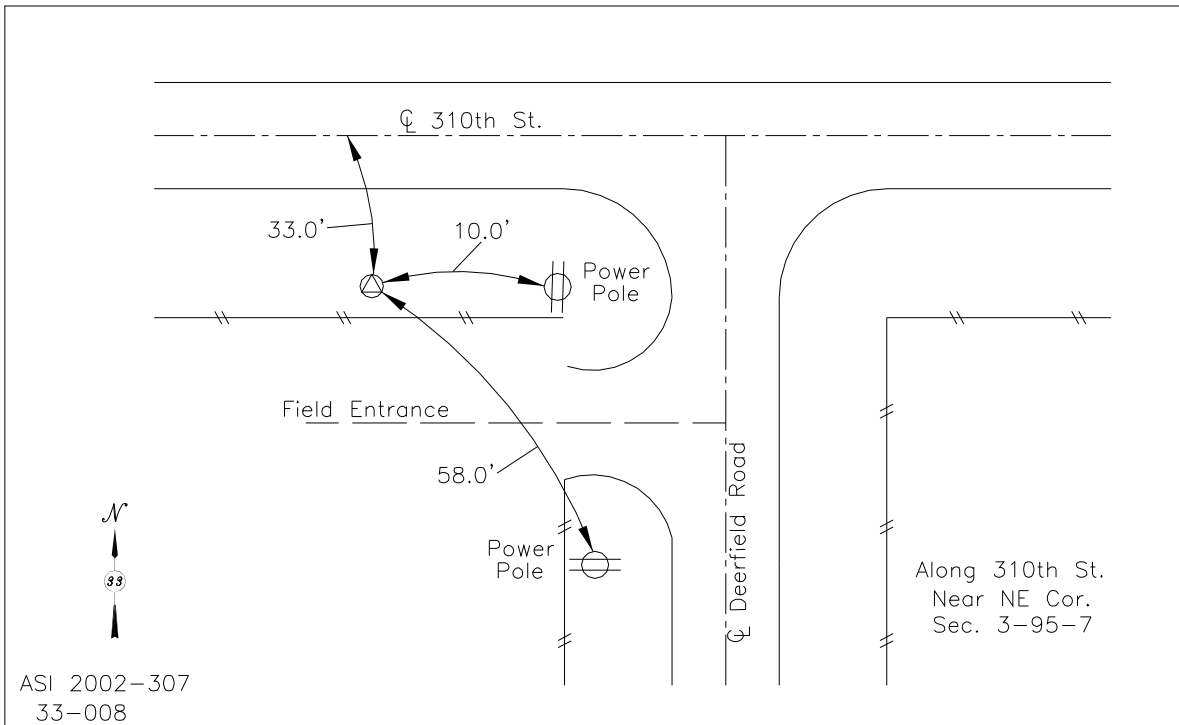
Iowa North Zone (1401) Northing: **3862582.282sft** Easting: **5411425.064sft**

IaRCS Zone 2 Northing: **9770915.856sft** Easting: **12789856.601sft**

Location: Near the SE Cor of Sec 33 T96N R7W.

Designation: FAYETTE COUNTY GPS CONTROL PT 2003-307

Monument Type: 5/8" dia driven aluminum rod with a 3-1/2" dia aluminum cap and permanent magnet encased in a 5" dia PVC pipe with an aluminum access cover.



This document was prepared by DCI on February 7, 2014 for use by Winneshiek County, Iowa