

**2014 Winneshiek County, Iowa**  
Horizontal Datum: **NAD 83(2011)** - Vertical Datum: **NAVD 1988**  
Iowa North Zone (1401)  
Iowa Regional Coordinate System Zone 2 Mason City  
US Survey Feet

Point Name: **10308**

NAD 83(2011)      Latitude: **N43°04'35.02530"**      Longitude: **W91°36'20.70106"**

NAVD 88 Ortho Height: **1196.470sft**      Ellip. Ht: **1096.070sft**      **Geoid12A**

Mapping Angle: **1°17'02"**      Combination Scale Factor: **0.9999184852**

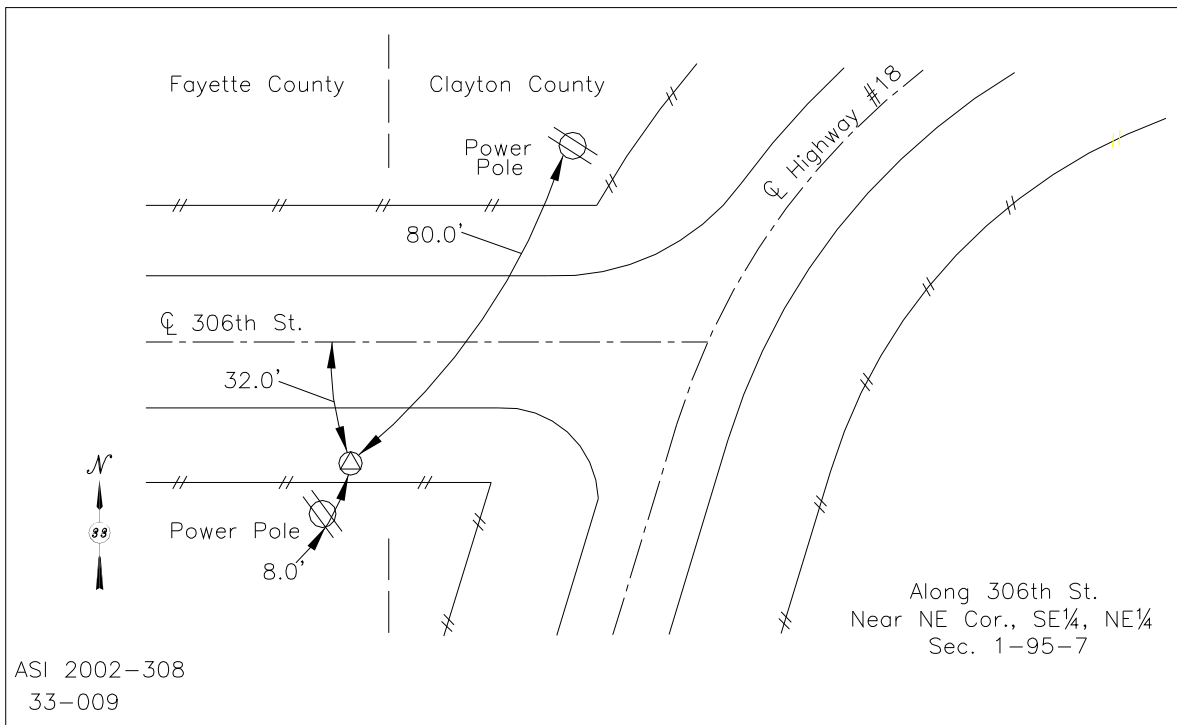
Iowa North Zone (1401)      Northing: **3860990.409sft**      Easting: **5427318.670sft**

IaRCS Zone 2      Northing: **9769184.888sft**      Easting: **12805736.834sft**

**Location:** Near the E 1/4 Cor of Sec 1 T95N R7W.

**Designation:** FAYETTE COUNTY GPS CONTROL PT 2003-308

**Monument Type:** 5/8" dia driven aluminum rod with a 3-1/2" dia aluminum cap and permanent magnet encased in a 5" dia PVC pipe with an aluminum access cover.



*This document was prepared by DCI on February 7, 2014 for use by Winneshiek County, Iowa*