

2014 Winneshiek County, Iowa
Horizontal Datum: **NAD 83(2011)** - Vertical Datum: **NAVD 1988**
Iowa North Zone (1401)
Iowa Regional Coordinate System Zone 2 Mason City
US Survey Feet

Point Name: **10414**

NAD 83(2011) Latitude: **N43°23'12.40706"** Longitude: **W92°04'49.81603"**

NAVD 88 Ortho Height: **1265.740sft** Ellip. Ht: **1166.307sft** **Geoid12A**

Mapping Angle: **0°57'43"** Combination Scale Factor: **0.9999685134**

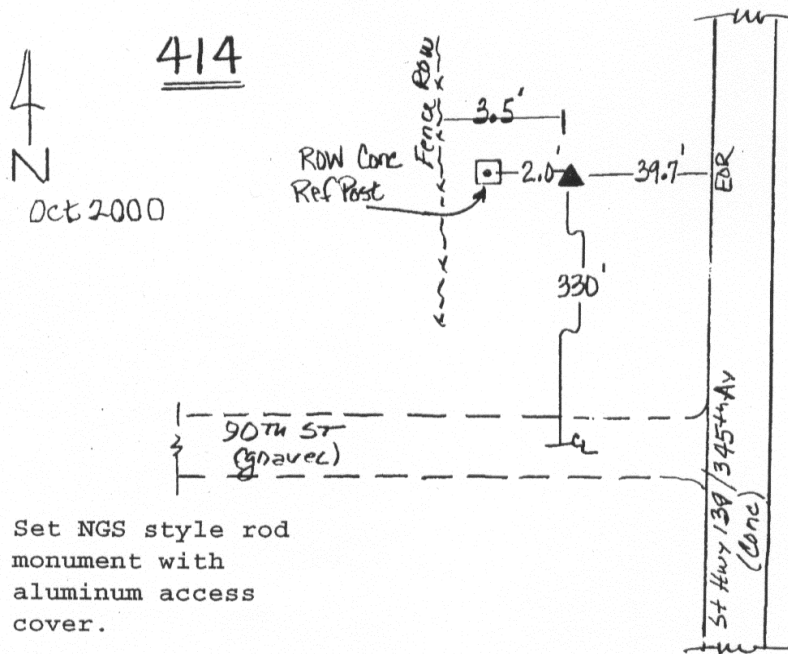
Iowa North Zone (1401) Northing: **3971620.292sft** Easting: **5298597.523sft**

IaRCS Zone 2 Northing: **9880945.040sft** Easting: **12677984.557sft**

Location: Near the SE Cor of Sec 13 T99N R11W.

Designation: HOWARD COUNTY GPS CONTROL PT 2000-414

Monument Type: 5/8" dia driven aluminum rod with a 3-1/2" dia aluminum cap and permanent magnet encased in a 5" dia PVC pipe with an aluminum access cover.



This document was prepared by DCI on February 7, 2014 for use by Winneshiek County, Iowa