

**2014 Winneshiek County, Iowa**  
Horizontal Datum: **NAD 83(2011)** - Vertical Datum: **NAVD 1988**  
Iowa North Zone (1401)  
Iowa Regional Coordinate System Zone 2 Mason City  
US Survey Feet

Point Name: **10500**

NAD 83(2011)      Latitude: **N43°32'40.95491"**      Longitude: **W92°11'21.31139"**

NAVD 88 Ortho Height: **1341.550sft**      Ellip. Ht: **1241.984sft**      **Geoid12A**

Mapping Angle: **0°53'18"**      Combination Scale Factor: **1.0000034144**

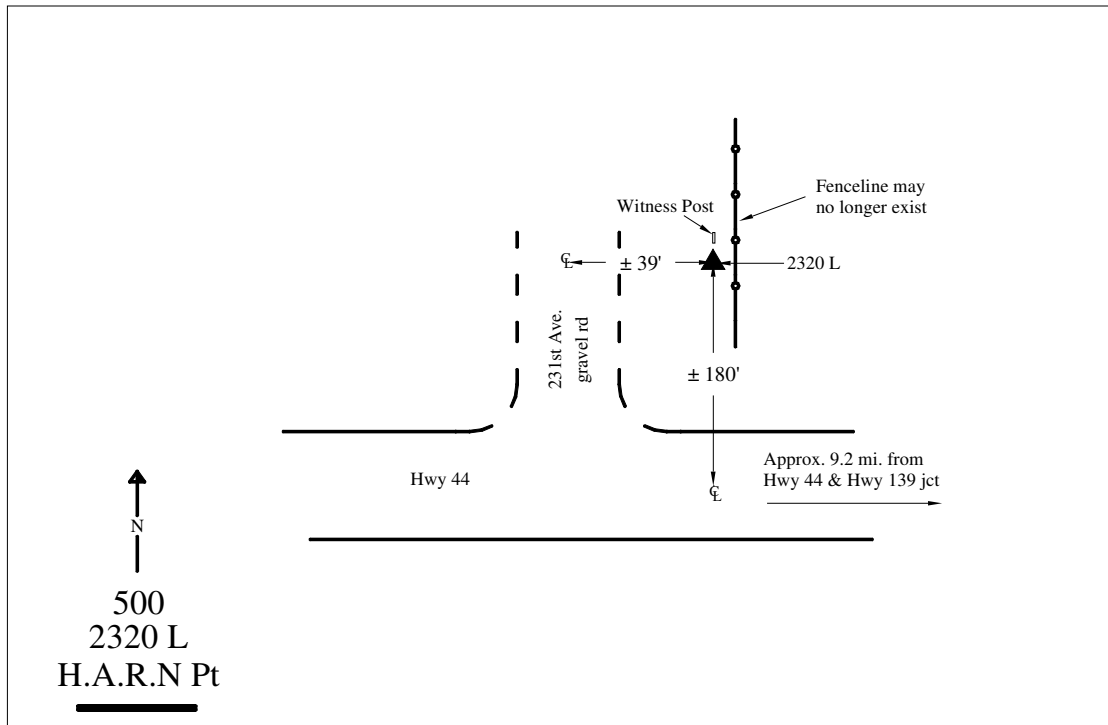
Iowa North Zone (1401)      Northing: **4028715.520sft**      Easting: **5268798.483sft**

IaRCS Zone 2      Northing: **9938301.188sft**      Easting: **12648688.871sft**

**Location:** Near the NE Cor of Sec 19 T101N R11W.

**Designation:** CBN 2nd order Vert. Station "2320 L" - PID AC4914

**Monument Type:** Driven rod monument with aluminum cap in an open PVC casing.  
Set by MNDT with stamping "2320 L 1981".



*This document was prepared by DCI on February 7, 2014 for use by Winneshiek County, Iowa*