

2014 Winneshiek County, Iowa
Horizontal Datum: **NAD 83(2011)** - Vertical Datum: **NAVD 1988**
Iowa North Zone (1401)
Iowa Regional Coordinate System Zone 2 Mason City
US Survey Feet

Point Name: **10501**

NAD 83(2011) Latitude: **N43°32'37.39144"** Longitude: **W92°06'53.43116"**

NAVD 88 Ortho Height: **1336.850sft** Ellip. Ht: **1237.322sft** **Geoid12A**

Mapping Angle: **0°56'20"** Combination Scale Factor: **1.0000033715**

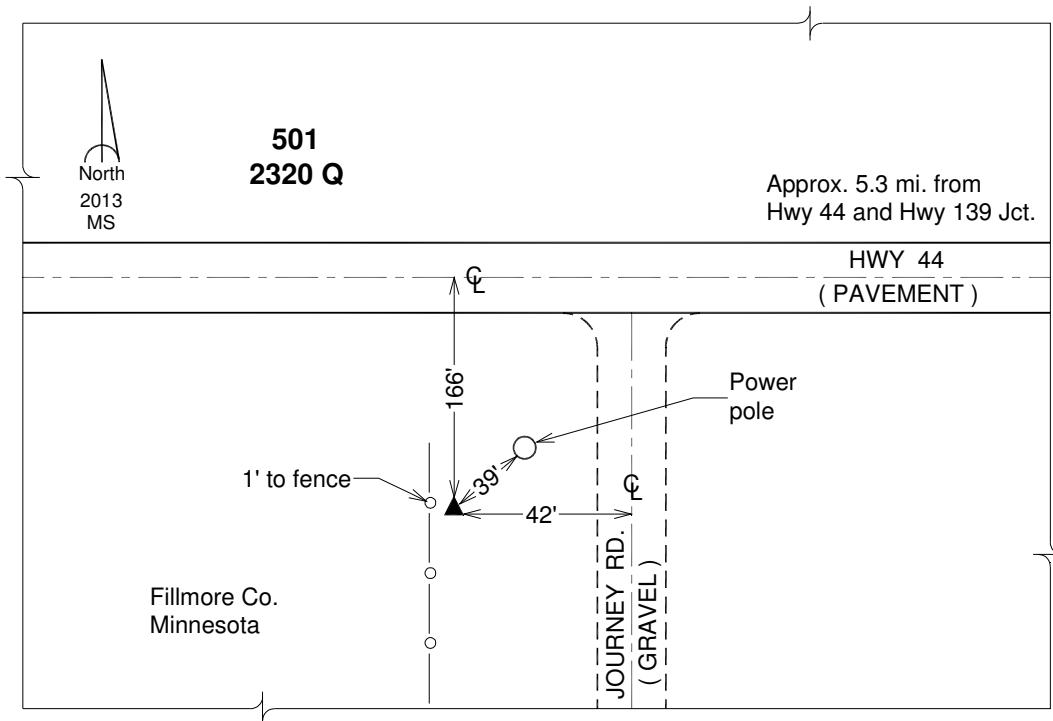
Iowa North Zone (1401) Northing: **4028669.328sft** Easting: **5288533.025sft**

IaRCS Zone 2 Northing: **9938081.236sft** Easting: **12668422.283sft**

Location: Near the N 1/4 Cor of Sec 23 T101N R11W.

Designation: NGS 2nd order Vert. Station BM "2320 Q" - PID AE8073

Monument Type: Aluminum cap on driven rod in open PVC casing. Set by MNMT with stamping "2320 Q 1981".



This document was prepared by DCI on February 7, 2014 for use by Winneshiek County, Iowa