

2014 Winneshiek County, Iowa
Horizontal Datum: **NAD 83(2011)** - Vertical Datum: **NAVD 1988**
Iowa North Zone (1401)
Iowa Regional Coordinate System Zone 2 Mason City
US Survey Feet

Point Name: **10502**

NAD 83(2011) Latitude: **N43°32'22.69657"** Longitude: **W91°57'02.76052"**

NAVD 88 Ortho Height: **1339.870sft** Ellip. Ht: **1240.835sft** **Geoid12A**

Mapping Angle: **1°03'00"** Combination Scale Factor: **1.0000021132**

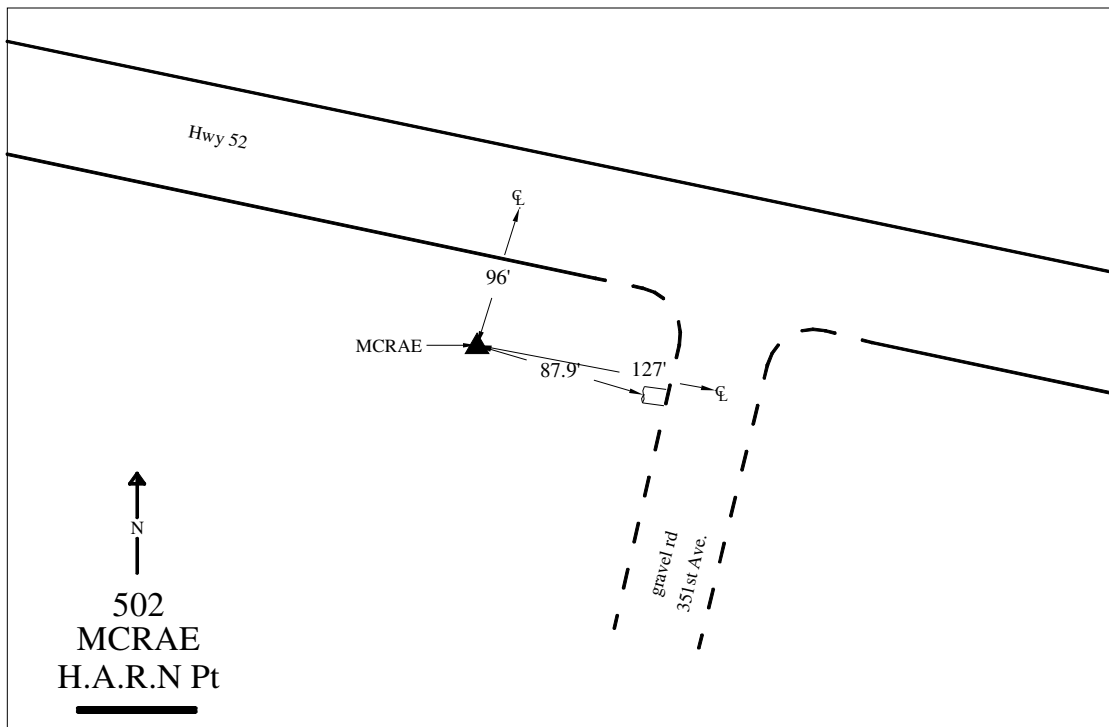
Iowa North Zone (1401) Northing: **4027936.629sft** Easting: **5332061.205sft**

IaRCS Zone 2 Northing: **9936965.876sft** Easting: **12711942.449sft**

Location: Near the E 1/4 Cor of Sec 30 T101N R9W.

Designation: CBN 2nd order Vert. Station "MCRAE" - PID AC4919

Monument Type: Flange-encased stainless steel rod with a bullet point. Set by MNDDT with stamping "MCRAE 1994".



This document was prepared by DCI on February 7, 2014 for use by Winneshiek County, Iowa