

**2014 Winneshiek County, Iowa**  
Horizontal Datum: **NAD 83(2011)** - Vertical Datum: **NAVD 1988**  
Iowa North Zone (1401)  
Iowa Regional Coordinate System Zone 2 Mason City  
US Survey Feet

Point Name: **10503**

NAD 83(2011)      Latitude: **N43°30'54.78498"**      Longitude: **W91°52'05.08938"**

NAVD 88 Ortho Height: **1324.730sft**      Ellip. Ht: **1225.859sft**      **Geoid12A**

Mapping Angle: **1°06'22"**      Combination Scale Factor: **0.9999964093**

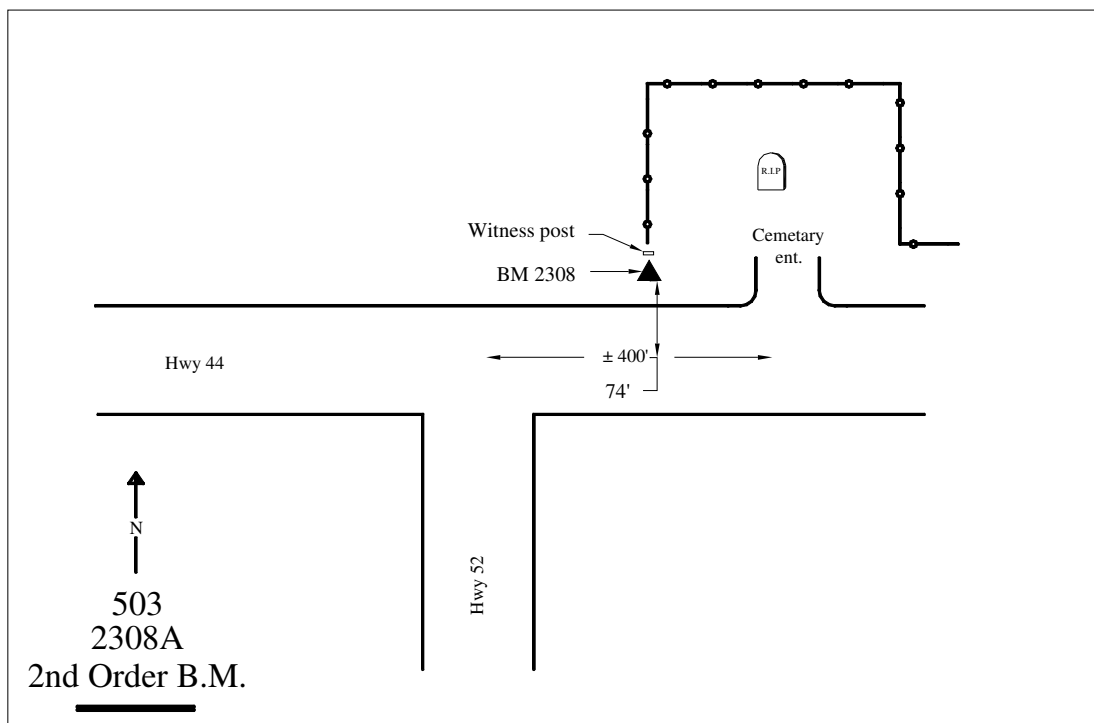
Iowa North Zone (1401)      Northing: **4019448.997sft**      Easting: **5354156.394sft**

IaRCS Zone 2      Northing: **9928284.579sft**      Easting: **12733962.387sft**

**Location:** Near the NW Cor of Sec 36 T101N R9W.

**Designation:** NGS 2nd order Vert. Station BM "2308 A" - PID ON1216

**Monument Type:** Copper-clad steel rod set by MNDT with stamping "2308 A 1981".



*This document was prepared by DCI on February 7, 2014 for use by Winneshiek County, Iowa*