

**2014 Winneshiek County, Iowa**  
Horizontal Datum: **NAD 83(2011)** - Vertical Datum: **NAVD 1988**  
Iowa North Zone (1401)  
Iowa Regional Coordinate System Zone 2 Mason City  
US Survey Feet

Point Name: **10506**

NAD 83(2011)      Latitude: **N43°29'13.30694"**      Longitude: **W91°52'15.27657"**

NAVD 88 Ortho Height: **1309.510sft**      Ellip. Ht: **1210.601sft**      **Geoid12A**

Mapping Angle: **1°06'15"**      Combination Scale Factor: **0.9999899567**

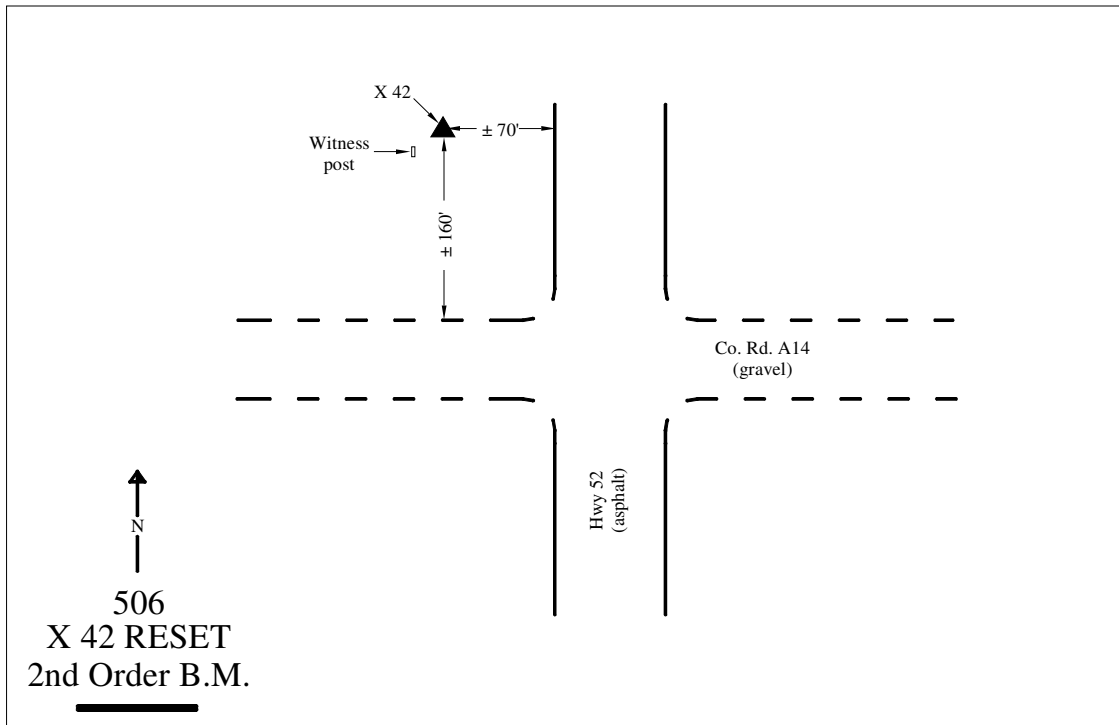
Iowa North Zone (1401)      Northing: **4009161.000sft**      Easting: **5353603.818sft**

IaRCS Zone 2      Northing: **9918001.736sft**      Easting: **12733319.564sft**

**Location:** Near the SE 1/4 Cor of Sec 11 T100N R9W.

**Designation:** NGS Vert. Station BM "X 42 RESET" - PID ON0478

**Monument Type:** Brass disk on a rod with stamping "X 42 RESET 1973". Disk is bent (has been hit sometime in the past).



*This document was prepared by DCI on February 7, 2014 for use by Winneshiek County, Iowa*