

2014 Winneshiek County, Iowa
Horizontal Datum: **NAD 83(2011)** - Vertical Datum: **NAVD 1988**
Iowa North Zone (1401)
Iowa Regional Coordinate System Zone 2 Mason City
US Survey Feet

Point Name: **10510**

NAD 83(2011) Latitude: **N43°17'53.56932"** Longitude: **W91°59'26.68766"**

NAVD 88 Ortho Height: **1207.870sft** Ellip. Ht: **1108.666sft** **Geoid12A**

Mapping Angle: **1°01'22"** Combination Scale Factor: **0.9999530213**

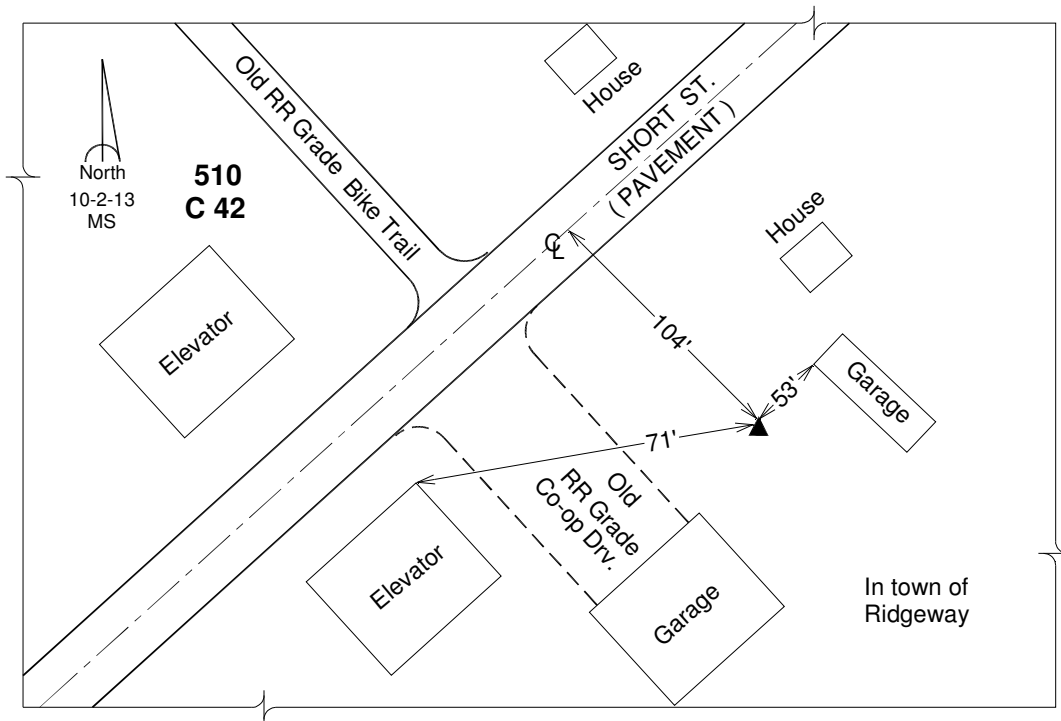
Iowa North Zone (1401) Northing: **3939756.064sft** Easting: **5323031.897sft**

IaRCS Zone 2 Northing: **9848866.159sft** Easting: **12702138.632sft**

Location: Near the N 1/4 Cor of Sec 23 T98N R10W.

Designation: NGS 2nd order Vert. Station BM "C 42" - PID ON0454

Monument Type: A standard bench disk set in the top of a concrete monument and stamped "C 42 1934".



This document was prepared by DCI on February 7, 2014 for use by Winneshiek County, Iowa