

**2014 Winneshiek County, Iowa**  
Horizontal Datum: **NAD 83(2011)** - Vertical Datum: **NAVD 1988**  
Iowa North Zone (1401)  
Iowa Regional Coordinate System Zone 2 Mason City  
US Survey Feet

Point Name: **10512**

NAD 83(2011)      Latitude: **N43°15'48.27072"**      Longitude: **W91°58'57.51866"**

NAVD 88 Ortho Height: **1169.950sft**      Ellip. Ht: **1070.611sft**      **Geoid12A**

Mapping Angle: **1°01'42"**      Combination Scale Factor: **0.9999483267**

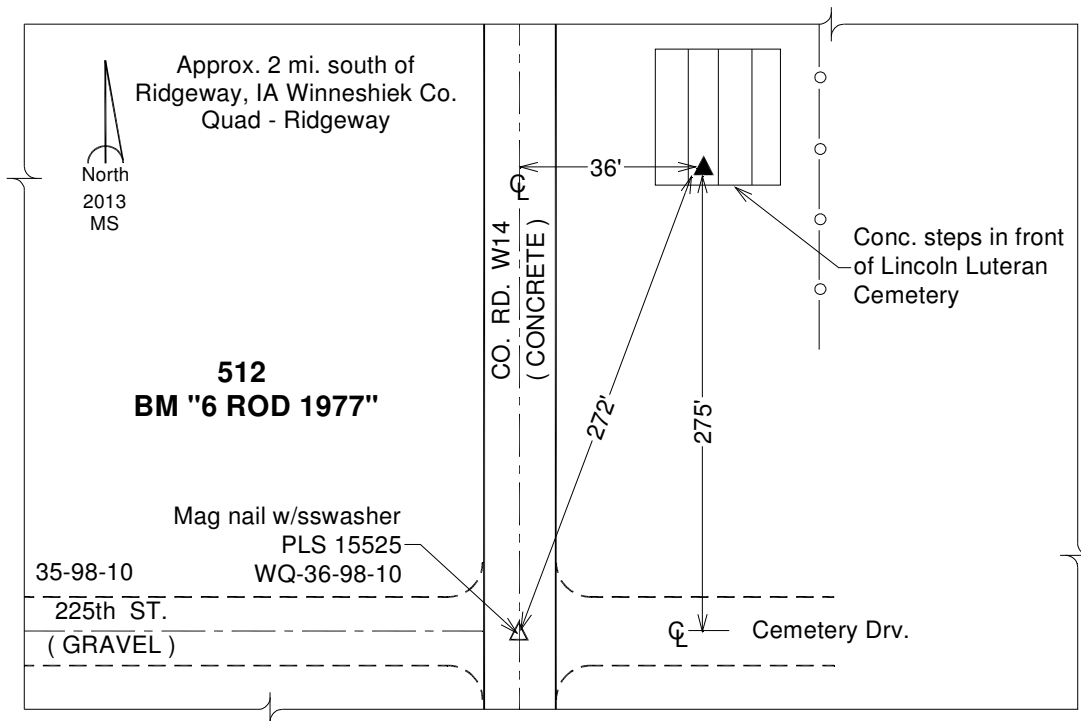
Iowa North Zone (1401)      Northing: **3927110.387sft**      Easting: **5325416.341sft**

IaRCS Zone 2      Northing: **9836199.482sft**      Easting: **12704411.968sft**

**Location:** Near the E 1/4 Cor of Sec 35 T98N R10W.

**Designation:** USGS Station BM "6 ROD 1977"

**Monument Type:** A standard bench disk set in concrete steps in front of Lincoln Lutheran Cemetery. Set by Dept. of Interior.



*This document was prepared by DCI on February 7, 2014 for use by Winneshiek County, Iowa*