

2014 Winneshiek County, Iowa
Horizontal Datum: **NAD 83(2011)** - Vertical Datum: **NAVD 1988**
Iowa North Zone (1401)
Iowa Regional Coordinate System Zone 2 Mason City
US Survey Feet

Point Name: **10513**

NAD 83(2011) Latitude: **N43°30'02.84038"** Longitude: **W92°04'30.12995"**

NAVD 88 Ortho Height: **1265.980sft** Ellip. Ht: **1166.504sft** **Geoid12A**

Mapping Angle: **0°57'57"** Combination Scale Factor: **0.9999955350**

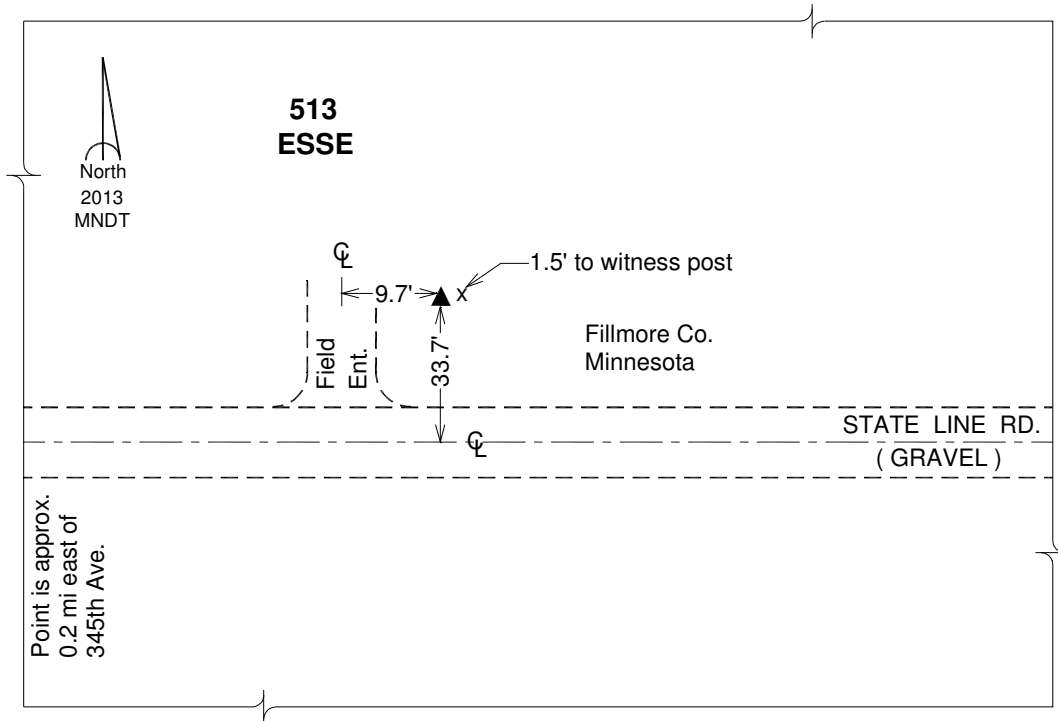
Iowa North Zone (1401) Northing: **4013197.355sft** Easting: **5299350.585sft**

IaRCS Zone 2 Northing: **9922514.596sft** Easting: **12679103.351sft**

Location: Near the SE 1/4 Cor of Sec 31 T101N R10W.

Designation: MNDT 3rd order Horiz. Station "ESSE"

Monument Type: Aluminum alloy rod (no sleeve, depth 25ft) with removable ID disk.
Set by MNDT with stamping "ESSE 2013".



This document was prepared by DCI on February 7, 2014 for use by Winneshiek County, Iowa