

2014 Winneshiek County, Iowa
Horizontal Datum: **NAD 83(2011)** - Vertical Datum: **NAVD 1988**
Iowa North Zone (1401)
Iowa Regional Coordinate System Zone 2 Mason City
US Survey Feet

Point Name: **10517**

NAD 83(2011) Latitude: **N43°22'56.19921"** Longitude: **W91°44'31.55373"**

NAVD 88 Ortho Height: **1162.881sft** Ellip. Ht: **1063.724sft** **Geoid12A**

Mapping Angle: **1°11'29"** Combination Scale Factor: **0.9999724222**

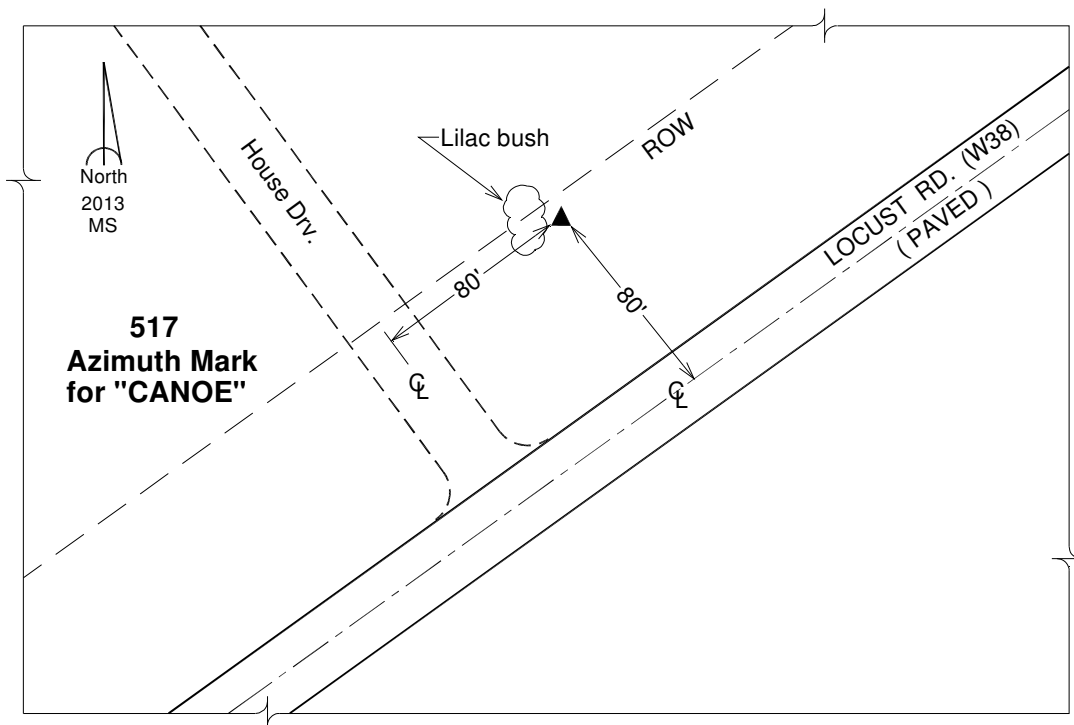
Iowa North Zone (1401) Northing: **3971670.097sft** Easting: **5388579.167sft**

IaRCS Zone 2 Northing: **9880204.948sft** Easting: **12767965.559sft**

Location: In the NE 1/4 of Sec 24 T99N R8W.

Designation: Azimuth Mark for "CANOE" - PID ON0867

Monument Type: The monument projects 5 inches and the disk is stamped "CANOE 1961".



This document was prepared by DCI on February 7, 2014 for use by Winneshiek County, Iowa