

2014 Winneshiek County, Iowa
Horizontal Datum: **NAD 83(2011)** - Vertical Datum: **NAVD 1988**
Iowa North Zone (1401)
Iowa Regional Coordinate System Zone 2 Mason City
US Survey Feet

Point Name: **10524**

NAD 83(2011) Latitude: **N42°56'07.47969"** Longitude: **W91°50'59.32203"**

NAVD 88 Ortho Height: **1179.880sft** Ellip. Ht: **1079.429sft** **Geoid12A**

Mapping Angle: **1°07'06"** Combination Scale Factor: **0.9999047648**

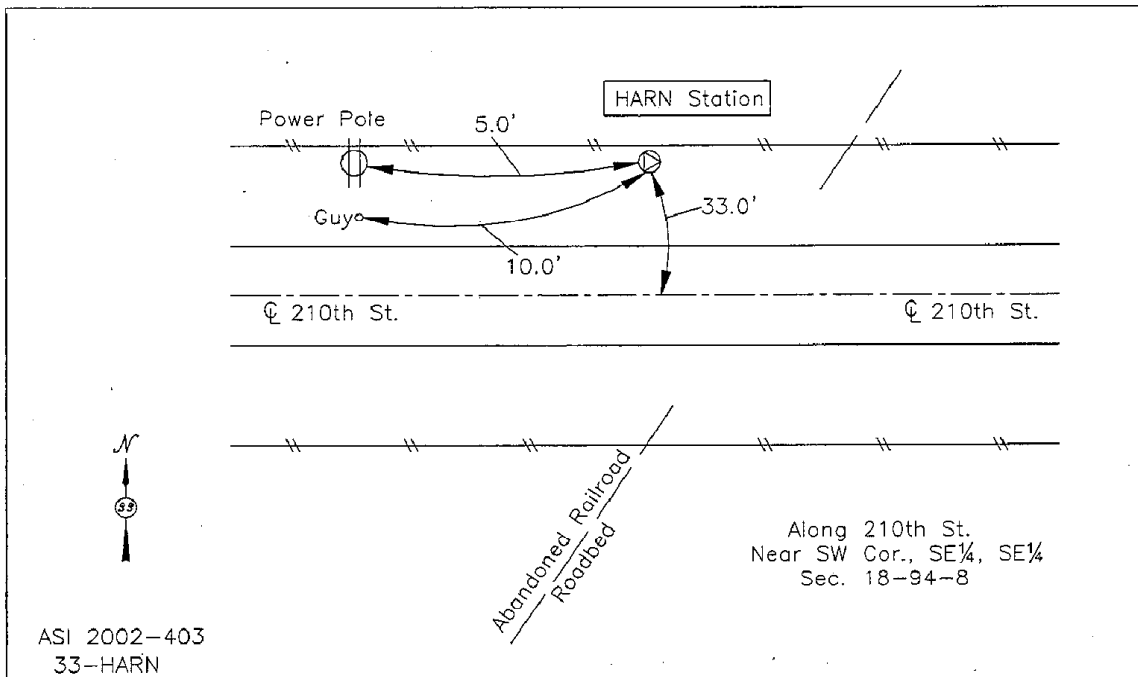
Iowa North Zone (1401) Northing: **3808249.430sft** Easting: **5363126.950sft**

IaRCS Zone 2 Northing: **9717003.717sft** Easting: **12741080.243sft**

Location: Near the SE 1/4 Cor of Sec 24 T94N R9W.

Designation: NGS 1st order Vert. Station BM "C 12" - PID NJ0599

Monument Type: Bench mark disk set in the top of a concrete monument and stamped "C 12 1933".



This document was prepared by DCI on February 7, 2014 for use by Winneshiek County, Iowa