

2014 Winneshiek County, Iowa
Horizontal Datum: **NAD 83(2011)** - Vertical Datum: **NAVD 1988**
Iowa North Zone (1401)
Iowa Regional Coordinate System Zone 2 Mason City
US Survey Feet

Point Name: **10602**

NAD 83(2011) Latitude: **N43°19'15.37838"** Longitude: **W91°46'21.81292"**

NAVD 88 Ortho Height: **1136.348sft** Ellip. Ht: **1037.419sft** **Geoid12A**

Mapping Angle: **1°10'14"** Combination Scale Factor: **0.9999608714**

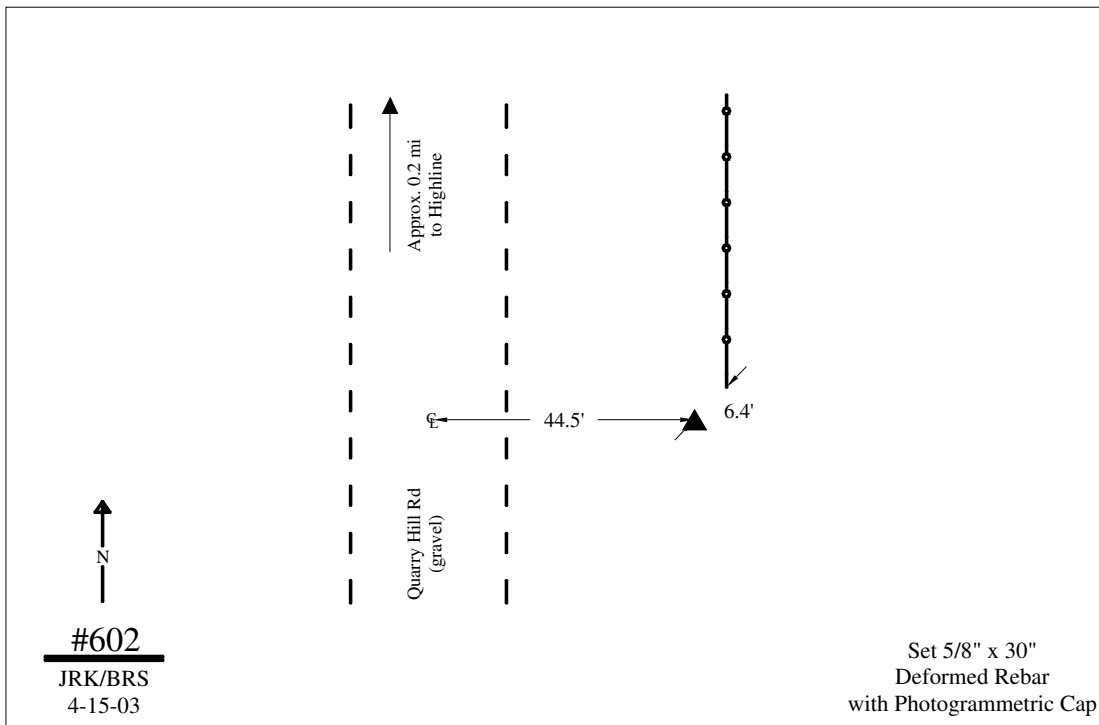
Iowa North Zone (1401) Northing: **3949148.494sft** Easting: **5380894.921sft**

IaRCS Zone 2 Northing: **9857750.823sft** Easting: **12760084.047sft**

Location: Near the Center of Sec 10 T98N R8W.

Designation: N/A

Monument Type: 5/8" dia 30" deformed rebar



This document was prepared by DCI on February 7, 2014 for use by Winneshiek County, Iowa