

2014 Winneshiek County, Iowa
Horizontal Datum: **NAD 83(2011)** - Vertical Datum: **NAVD 1988**
Iowa North Zone (1401)
Iowa Regional Coordinate System Zone 2 Mason City
US Survey Feet

Point Name: **10603**

NAD 83(2011) Latitude: **N43°18'11.98701"** Longitude: **W91°49'01.93889"**

NAVD 88 Ortho Height: **911.061sft** Ellip. Ht: **812.197sft** **Geoid12A**

Mapping Angle: **1°08'26"** Combination Scale Factor: **0.9999681538**

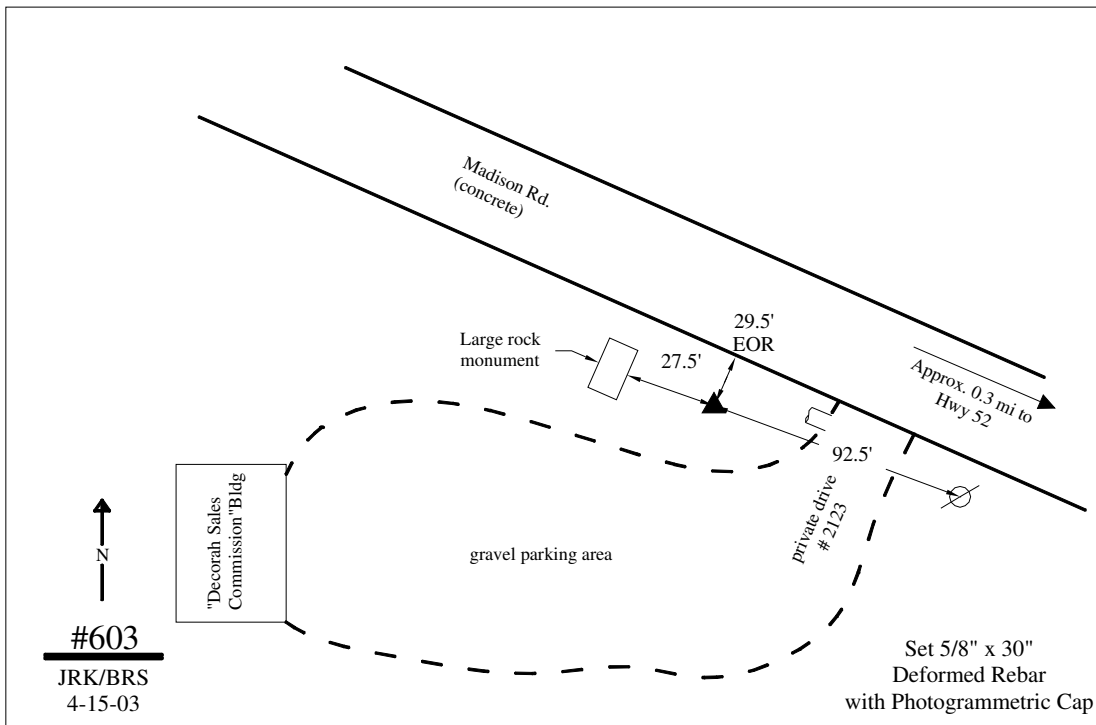
Iowa North Zone (1401) Northing: **3942492.667sft** Easting: **5369187.835sft**

IaRCS Zone 2 Northing: **9851197.620sft** Easting: **12748318.629sft**

Location: In the SW 1/4 of Sec 17 T98N R8W.

Designation: N/A

Monument Type: 5/8" dia 30" deformed rebar



This document was prepared by DCI on February 7, 2014 for use by Winneshiek County, Iowa