

2014 Winneshiek County, Iowa
Horizontal Datum: **NAD 83(2011)** - Vertical Datum: **NAVD 1988**
Iowa North Zone (1401)
Iowa Regional Coordinate System Zone 2 Mason City
US Survey Feet

Point Name: **10608**

NAD 83(2011) Latitude: **N43°16'56.02158"** Longitude: **W91°46'07.76033"**

NAVD 88 Ortho Height: **870.045sft** Ellip. Ht: **771.125sft** **Geoid12A**

Mapping Angle: **1°10'24"** Combination Scale Factor: **0.9999660889**

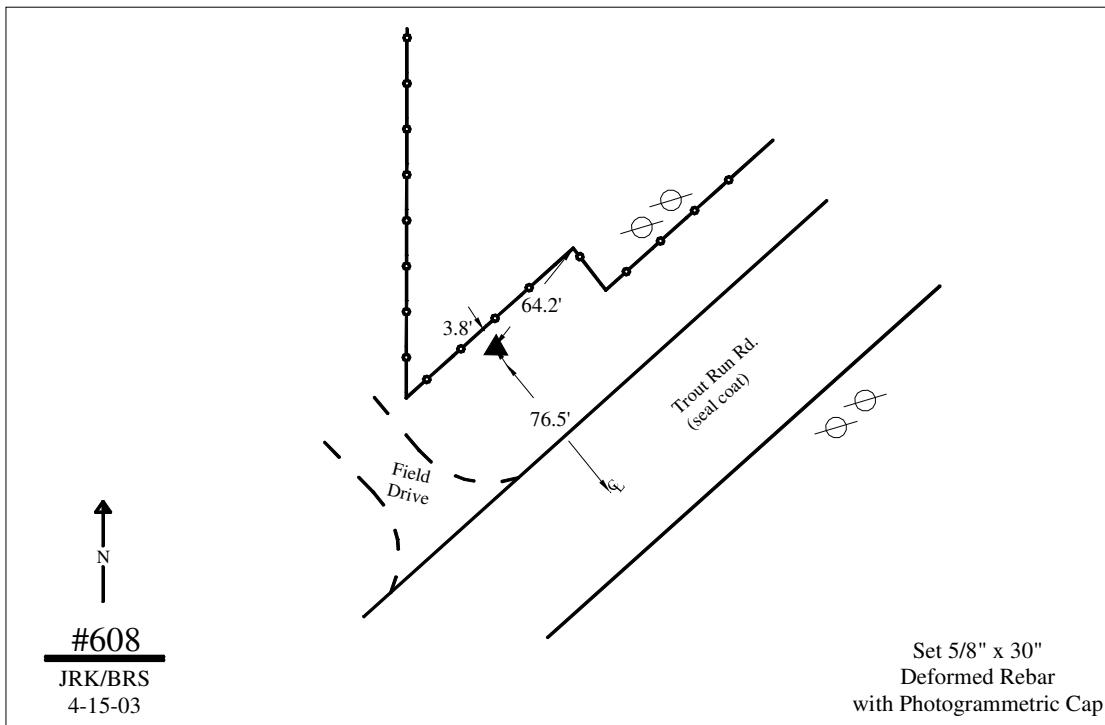
Iowa North Zone (1401) Northing: **3935062.884sft** Easting: **5382222.455sft**

IaRCS Zone 2 Northing: **9843653.569sft** Easting: **12761288.151sft**

Location: In the NE 1/4 of Sec 27 T98N R8W.

Designation: N/A

Monument Type: 5/8" dia 30" deformed rebar



This document was prepared by DCI on February 7, 2014 for use by Winneshiek County, Iowa