

2014 Winneshiek County, Iowa
Horizontal Datum: **NAD 83(2011)** - Vertical Datum: **NAVD 1988**
Iowa North Zone (1401)
Iowa Regional Coordinate System Zone 2 Mason City
US Survey Feet

Point Name: **13201**

NAD 83(2011) Latitude: **N43°30'02.07793"** Longitude: **W91°36'38.42591"**

NAVD 88 Ortho Height: **1219.320sft** Ellip. Ht: **1119.618sft** **Geoid12A**

Mapping Angle: **1°16'50"** Combination Scale Factor: **0.9999977180**

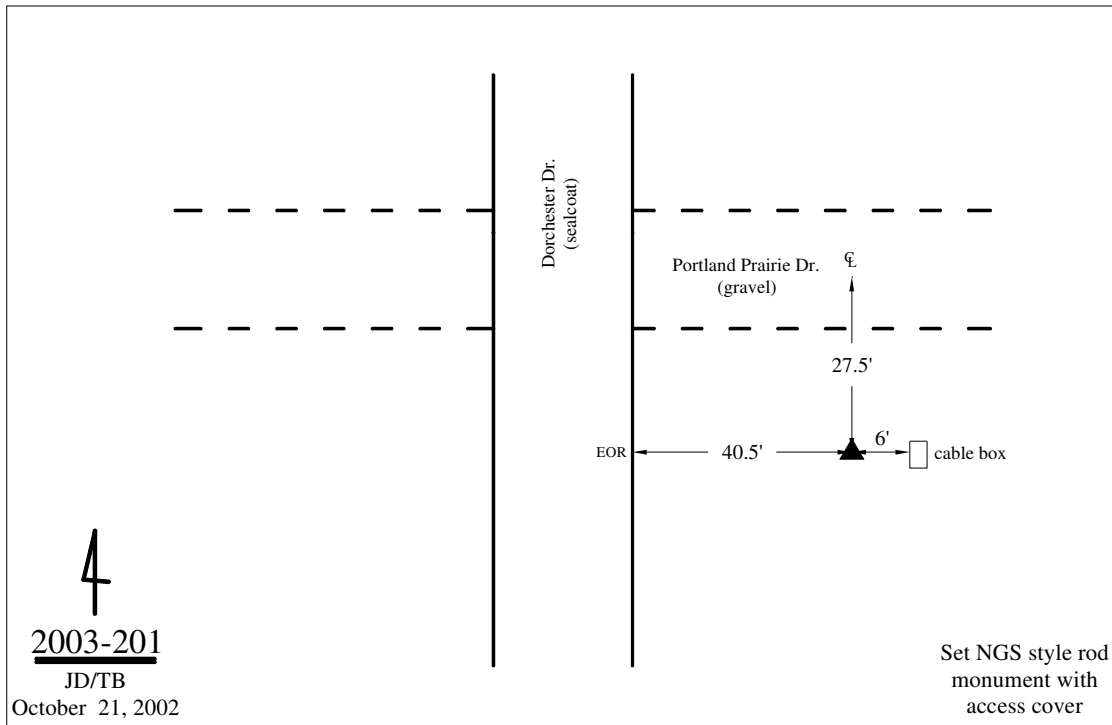
Iowa North Zone (1401) Northing: **4015535.389sft** Easting: **5422548.409sft**

IaRCS Zone 2 Northing: **9923772.038sft** Easting: **12802318.023sft**

Location: Near NW Cor of Sec 7 T100N R6W.

Designation: ALLAMAKEE COUNTY GPS CONTROL PT 2002-201

Monument Type: 5/8" dia driven aluminum rod with a 3-1/2" dia aluminum cap and permanent magnet encased in a 5" dia PVC pipe with an aluminum access cover.



This document was prepared by DCI on February 7, 2014 for use by Winneshiek County, Iowa