

2014 Winneshiek County, Iowa
Horizontal Datum: **NAD 83(2011)** - Vertical Datum: **NAVD 1988**
Iowa North Zone (1401)
Iowa Regional Coordinate System Zone 2 Mason City
US Survey Feet

Point Name: **13208**

NAD 83(2011) Latitude: **N43°28'16.68582"** Longitude: **W91°37'14.86015"**

NAVD 88 Ortho Height: **1151.460sft** Ellip. Ht: **1051.850sft** **Geoid12A**

Mapping Angle: **1°16'25"** Combination Scale Factor: **0.9999936305**

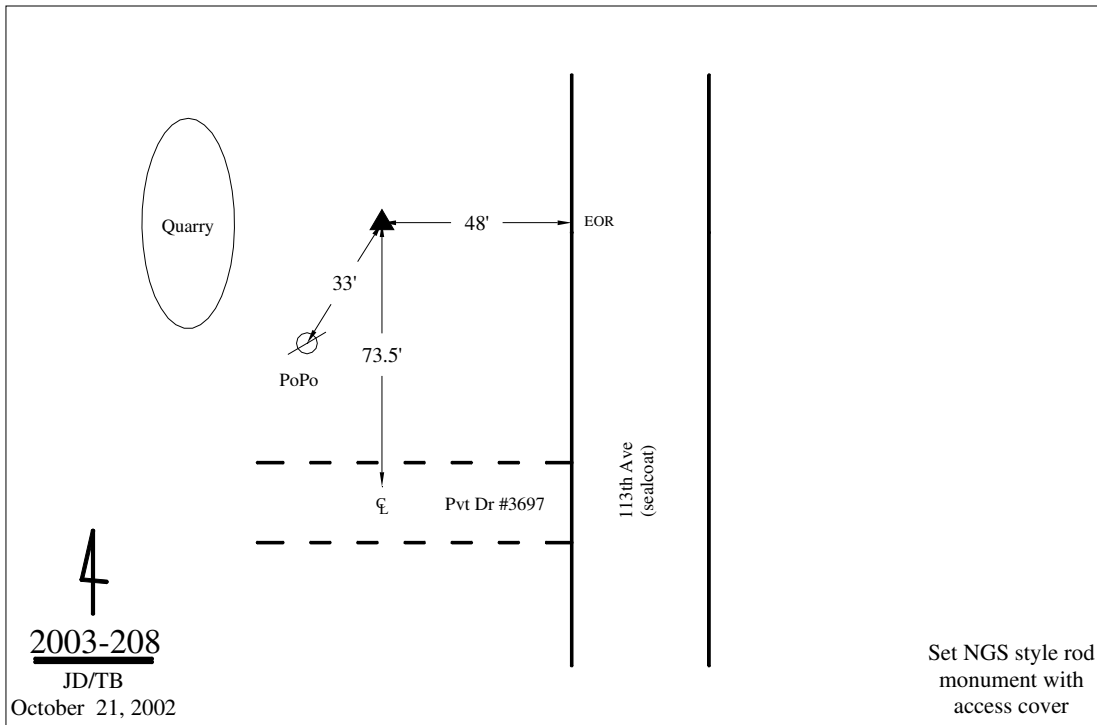
Iowa North Zone (1401) Northing: **4004806.486sft** Easting: **5420100.729sft**

IaRCS Zone 2 Northing: **9913064.833sft** Easting: **12799776.582sft**

Location: Near the S 1/4 Cor of Sec 13 T100N R7W.

Designation: ALLAMAKEE COUNTY GPS CONTROL PT 2002-208

Monument Type: 5/8" dia driven aluminum rod with a 3-1/2" dia aluminum cap and permanent magnet encased in a 5" dia PVC pipe with an aluminum access cover.



This document was prepared by DCI on February 7, 2014 for use by Winneshiek County, Iowa