

2014 Winneshiek County, Iowa
Horizontal Datum: **NAD 83(2011)** - Vertical Datum: **NAVD 1988**
Iowa North Zone (1401)
Iowa Regional Coordinate System Zone 2 Mason City
US Survey Feet

Point Name: **13229**

NAD 83(2011) Latitude: **N43°20'40.28382"** Longitude: **W91°36'28.33799"**

NAVD 88 Ortho Height: **802.120sft** Ellip. Ht: **702.468sft** **Geoid12A**

Mapping Angle: **1°16'57"** Combination Scale Factor: **0.9999816389**

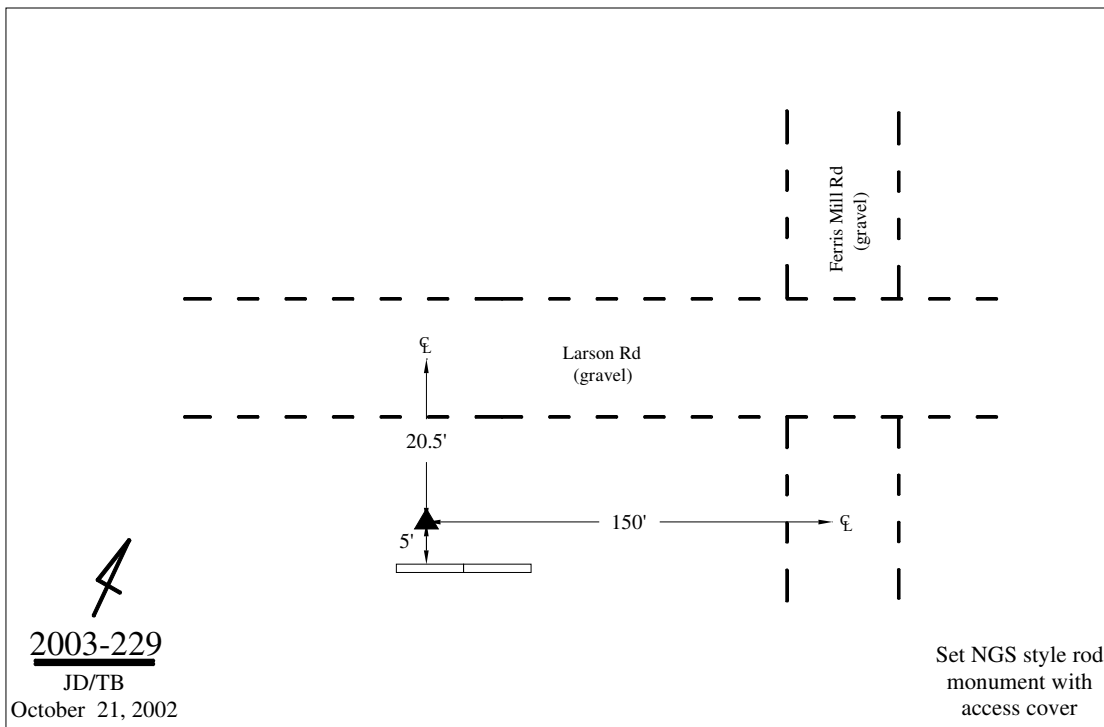
Iowa North Zone (1401) Northing: **3958682.172sft** Easting: **5424564.857sft**

IaRCS Zone 2 Northing: **9866902.183sft** Easting: **12803837.270sft**

Location: In the SW 1/4 of Sec 31 T99N R6W.

Designation: ALLAMAKEE COUNTY GPS CONTROL PT 2002-229

Monument Type: 5/8" dia driven aluminum rod with a 3-1/2" dia aluminum cap and permanent magnet encased in a 5" dia PVC pipe with an aluminum access cover.



This document was prepared by DCI on February 7, 2014 for use by Winneshiek County, Iowa