

2014 Winneshiek County, Iowa
Horizontal Datum: **NAD 83(2011)** - Vertical Datum: **NAVD 1988**
Iowa North Zone (1401)
Iowa Regional Coordinate System Zone 2 Mason City
US Survey Feet

Point Name: **13247**

NAD 83(2011) Latitude: **N43°15'17.81034"** Longitude: **W91°36'53.65887"**

NAVD 88 Ortho Height: **1230.950sft** Ellip. Ht: **1131.340sft** **Geoid12A**

Mapping Angle: **1°16'39"** Combination Scale Factor: **0.9999439030**

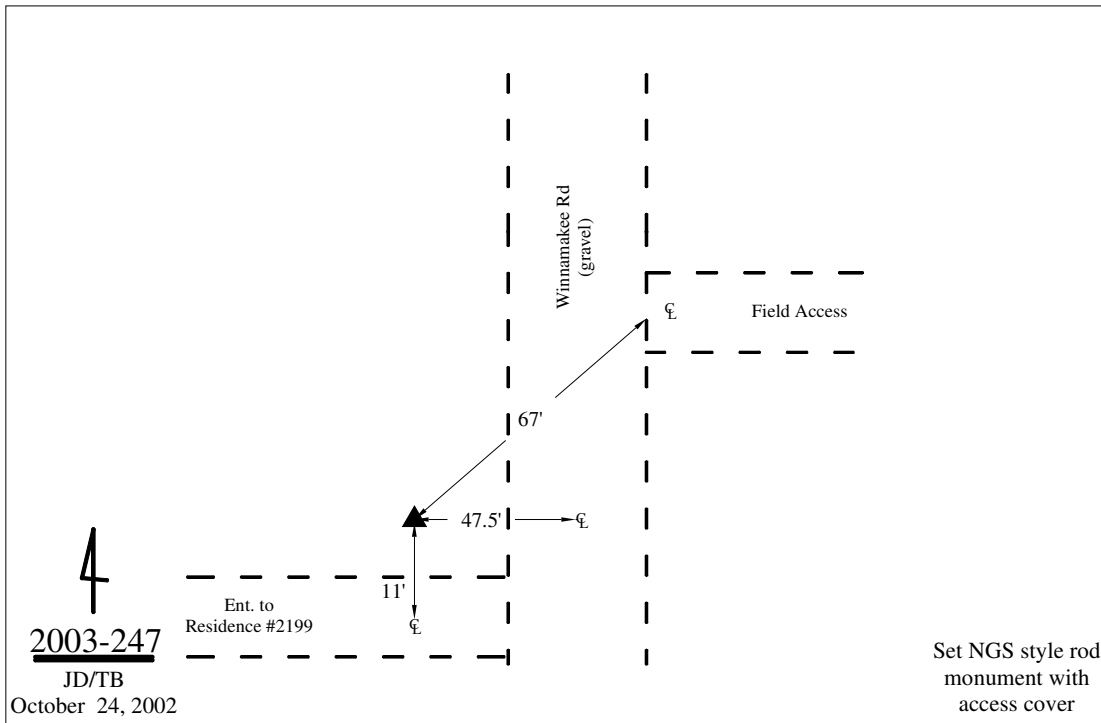
Iowa North Zone (1401) Northing: **3925998.211sft** Easting: **5423422.196sft**

IaRCS Zone 2 Northing: **9834228.174sft** Easting: **12802408.783sft**

Location: Near the N 1/4 Cor of Sec 1 T97N R7W.

Designation: ALLAMAKEE COUNTY GPS CONTROL PT 2002-247

Monument Type: 5/8" dia driven aluminum rod with a 3-1/2" dia aluminum cap and permanent magnet encased in a 5" dia PVC pipe with an aluminum access cover.



This document was prepared by DCI on February 7, 2014 for use by Winneshiek County, Iowa