

**2014 Winneshiek County, Iowa**  
Horizontal Datum: **NAD 83(2011)** - Vertical Datum: **NAVD 1988**  
Iowa North Zone (1401)  
Iowa Regional Coordinate System Zone 2 Mason City  
US Survey Feet

Point Name: **13257**

NAD 83(2011)      Latitude: **N43°12'40.91754"**      Longitude: **W91°36'15.13493"**

NAVD 88 Ortho Height: **1191.890sft**      Ellip. Ht: **1092.090sft**      **Geoid12A**

Mapping Angle: **1°17'06"**      Combination Scale Factor: **0.9999382604**

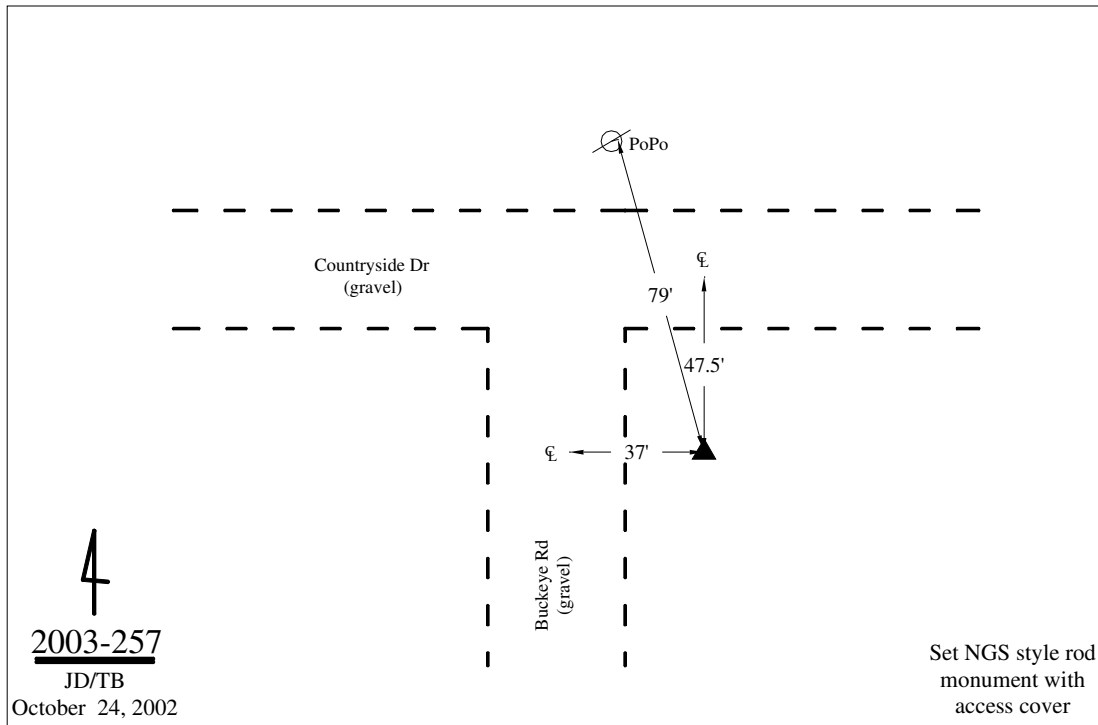
Iowa North Zone (1401)      Northing: **3910181.013sft**      Easting: **5426628.587sft**

IaRCS Zone 2      Northing: **9818382.756sft**      Easting: **12805476.888sft**

**Location:** Near the NW Cor of Sec 19 T97N R6W.

**Designation:** ALLAMAKEE COUNTY GPS CONTROL PT 2002-257

**Monument Type:** 5/8" dia driven aluminum rod with a 3-1/2" dia aluminum cap and permanent magnet encased in a 5" dia PVC pipe with an aluminum access cover.



*This document was prepared by DCI on February 7, 2014 for use by Winneshiek County, Iowa*