

2014 Winneshiek County, Iowa
Horizontal Datum: **NAD 83(2011)** - Vertical Datum: **NAVD 1988**
Iowa North Zone (1401)
Iowa Regional Coordinate System Zone 2 Mason City
US Survey Feet

Point Name: **13266**

NAD 83(2011) Latitude: **N43°09'53.74168"** Longitude: **W91°36'16.77733"**

NAVD 88 Ortho Height: **1186.220sft** Ellip. Ht: **1086.248sft** **Geoid12A**

Mapping Angle: **1°17'04"** Combination Scale Factor: **0.9999311717**

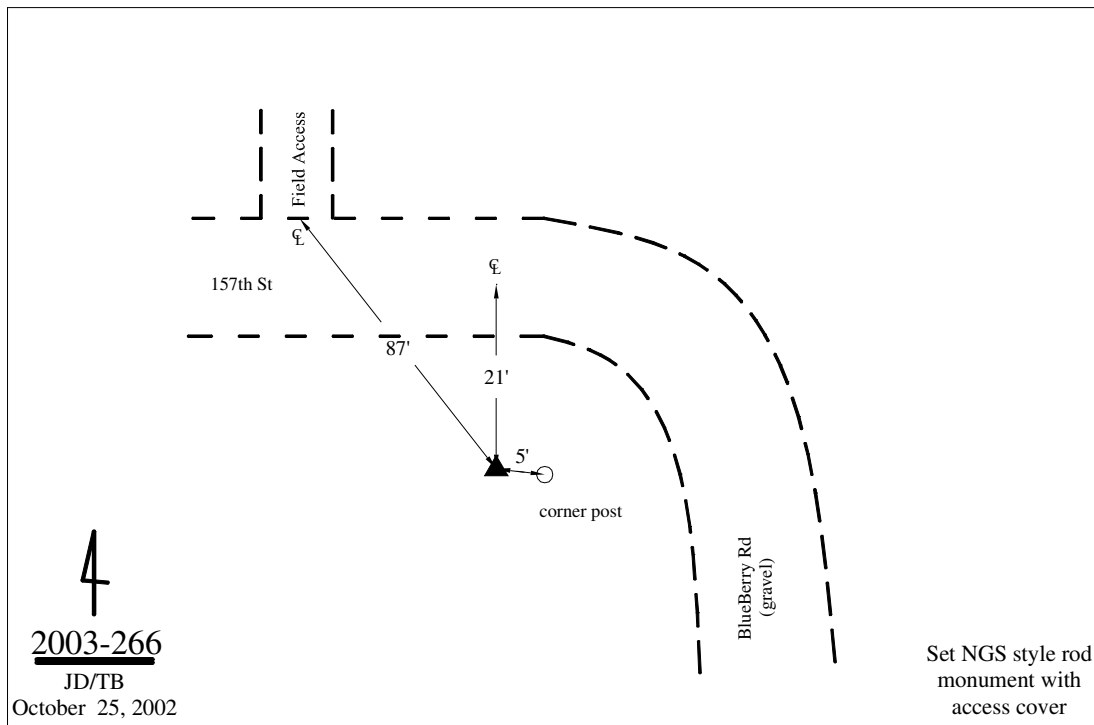
Iowa North Zone (1401) Northing: **3893256.732sft** Easting: **5426886.429sft**

IaRCS Zone 2 Northing: **9801455.911sft** Easting: **12805586.740sft**

Location: In the NE 1/4 of Sec 1 T96N R7W.

Designation: ALLAMAKEE COUNTY GPS CONTROL PT 2002-266

Monument Type: 5/8" dia driven aluminum rod with a 3-1/2" dia aluminum cap and permanent magnet encased in a 5" dia PVC pipe with an aluminum access cover.



This document was prepared by DCI on February 7, 2014 for use by Winneshiek County, Iowa