

2014 Winneshiek County, Iowa
Horizontal Datum: **NAD 83(2011)** - Vertical Datum: **NAVD 1988**
Iowa North Zone (1401)
Iowa Regional Coordinate System Zone 2 Mason City
US Survey Feet

Point Name: **13274**

NAD 83(2011) Latitude: **N43°07'30.81445"** Longitude: **W91°36'36.38057"**

NAVD 88 Ortho Height: **1040.090sft** Ellip. Ht: **939.967sft** **Geoid12A**

Mapping Angle: **1°16'51"** Combination Scale Factor: **0.9999323750**

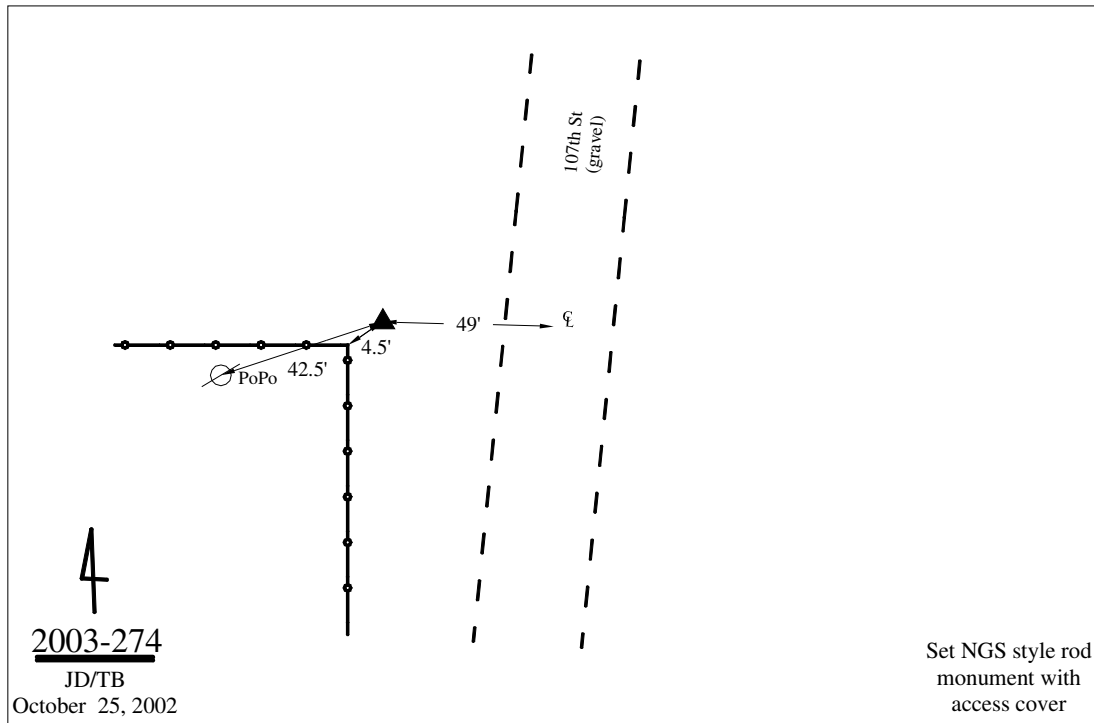
Iowa North Zone (1401) Northing: **3878757.286sft** Easting: **5425757.435sft**

IaRCS Zone 2 Northing: **9786965.978sft** Easting: **12804330.922sft**

Location: In the SE 1/4 of Sec 13 T96N R7W.

Designation: ALLAMAKEE COUNTY GPS CONTROL PT 2002-274

Monument Type: 5/8" dia driven aluminum rod with a 3-1/2" dia aluminum cap and permanent magnet encased in a 5" dia PVC pipe with an aluminum access cover.



This document was prepared by DCI on February 7, 2014 for use by Winneshiek County, Iowa