

Woodbury County, Iowa

Horizontal Datum: **NAD 83(2011)** - Vertical Datum: **NAVD 1988**

Iowa State Plane North Zone (1401)

Iowa Regional Coordinate System Zone 4 Sioux City-Iowa Falls LCC

US Survey Feet

2015

Point Name: **26**

GPS No. (1998): **8120**

Designation: 95-026 Plymouth County GPS Control Pt. (Set by ASI in 1995)

NAD 83(NA2011) Latitude: **N42°33'41.22211"** Longitude: **W96°28'50.59247"**

NAVD 88 Ortho Height: **1115.970sft** Ellip. Ht: **1030.773sft** Geoid09

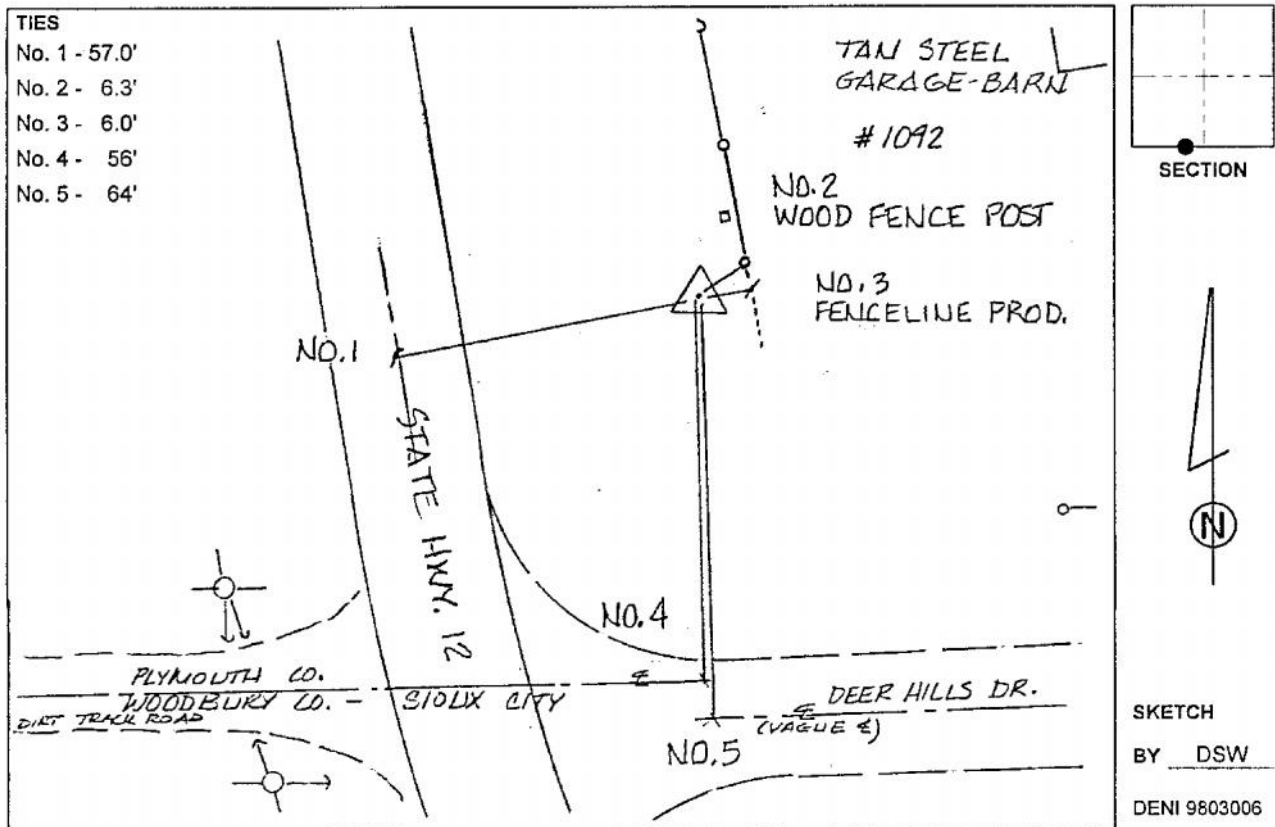
Iowa North Zone (1401) Northing: **3681804.896sft** Easting: **4118402.097sft**

Mapping Angle: **-2°01'13"** Combination Scale Factor: **0.999897900**

laRCS Zone 4 Northing: **8614561.221sft** Easting: **14056173.860sft**

Mapping Angle: **'-01° 06' 49"** Combination Scale Factor: **0.999995757**

Monument Type: 2-1/2" aluminum cap on aluminum rod in 5" diameter PVC pipe with aluminum access cover.



This document was prepared by Dan Corbin, Inc. on March 6, 2015 for Woodbury County, Iowa.