

Woodbury County, Iowa

Horizontal Datum: **NAD 83(2011)** - Vertical Datum: **NAVD 1988**

Iowa State Plane North Zone (1401)

Iowa Regional Coordinate System Zone 4 Sioux City-Iowa Falls LCC

US Survey Feet

2015

Point Name: **27**

GPS No. (1998): **8119**

Designation: 95-027 Plymouth County GPS Control Pt. (Set by ASI in 1995)

NAD 83(NA2011) Latitude: **N42°33'50.87836"**

Longitude: **W96°26'48.03933"**

NAVD 88 Ortho Height: **1277.980sft**

Ellip. Ht: **1192.612sft**

Geoid09

Iowa North Zone (1401) Northing: **3682460.359sft**

Easting: **4127601.681sft**

Mapping Angle: **-1°59'50"**

Combination Scale Factor: **0.999890094**

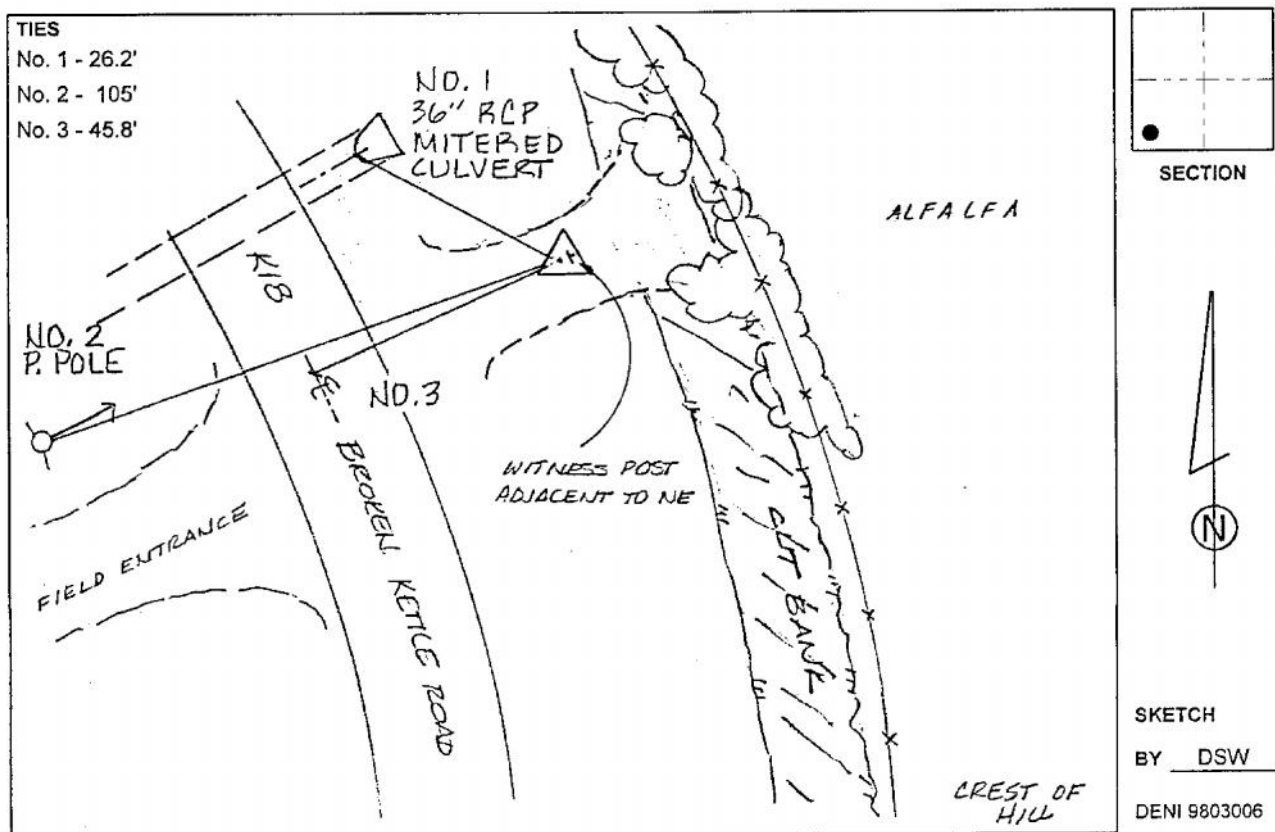
IaRCS Zone 4 Northing: **8615362.221sft**

Easting: **14065362.824sft**

Mapping Angle: **-01° 05' 26"**

Combination Scale Factor: **0.999988031**

Monument Type: 2-1/2" aluminum cap on aluminum rod in 5" diameter PVC pipe with aluminum access cover.



This document was prepared by Dan Corbin, Inc. on March 6, 2015 for Woodbury County, Iowa.