

Woodbury County, Iowa

Horizontal Datum: **NAD 83(2011)** - Vertical Datum: **NAVD 1988**

Iowa State Plane North Zone (1401)

Iowa Regional Coordinate System Zone 4 Sioux City-Iowa Falls LCC

US Survey Feet

2015

Point Name: **36**

GPS No. (1998): **8107**

Designation: 95-036 Plymouth County GPS Control Pt. (Set by ASI in 1995)

NAD 83(NA2011) Latitude: **N42°33'52.00464"**

Longitude: **W96°23'56.64889"**

NAVD 88 Ortho Height: **1173.700sft**

Ellip. Ht: **1088.044sft**

Geoid09

Iowa North Zone (1401) Northing: **3682130.969sft**

Easting: **4140423.225sft**

Mapping Angle: **-1°57'53"**

Combination Scale Factor: **0.999895072**

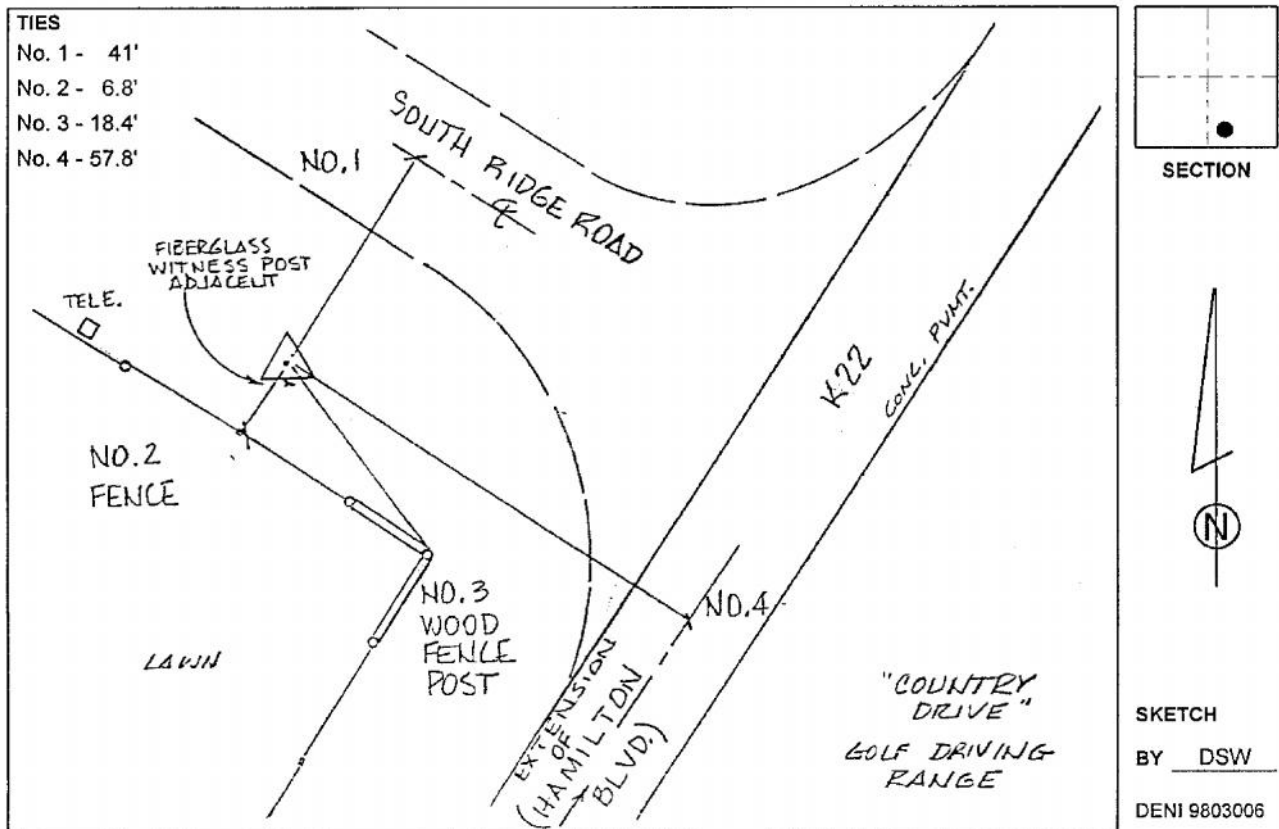
IaRCS Zone 4 Northing: **8615235.683sft**

Easting: **14078189.233sft**

Mapping Angle: **-01° 03' 30"**

Combination Scale Factor: **0.999993041**

Monument Type: 2-1/2" aluminum cap on aluminum rod in 5" diameter PVC pipe with aluminum access cover.



This document was prepared by Dan Corbin, Inc. on March 6, 2015 for Woodbury County, Iowa.