

**Woodbury County, Iowa**

Horizontal Datum: **NAD 83(2011)** - Vertical Datum: **NAVD 1988**

Iowa State Plane North Zone (1401)

Iowa Regional Coordinate System Zone 4 Sioux City-Iowa Falls LCC

US Survey Feet

**2015**

Point Name: **63**

GPS No. (1998): **8088**

**Designation:** 95-063 Plymouth County GPS Control Pt. (Set by ASI in 1995)

NAD 83(NA2011) Latitude: **N42°33'37.47297"**

Longitude: **W96°12'50.32186"**

NAVD 88 Ortho Height: **1276.690sft**

Ellip. Ht: **1189.777sft**

**Geoid09**

Iowa North Zone (1401) Northing: **3679005.677sft**

Easting: **4190210.120sft**

Mapping Angle: **-1°50'22"**

Combination Scale Factor: **0.999890348**

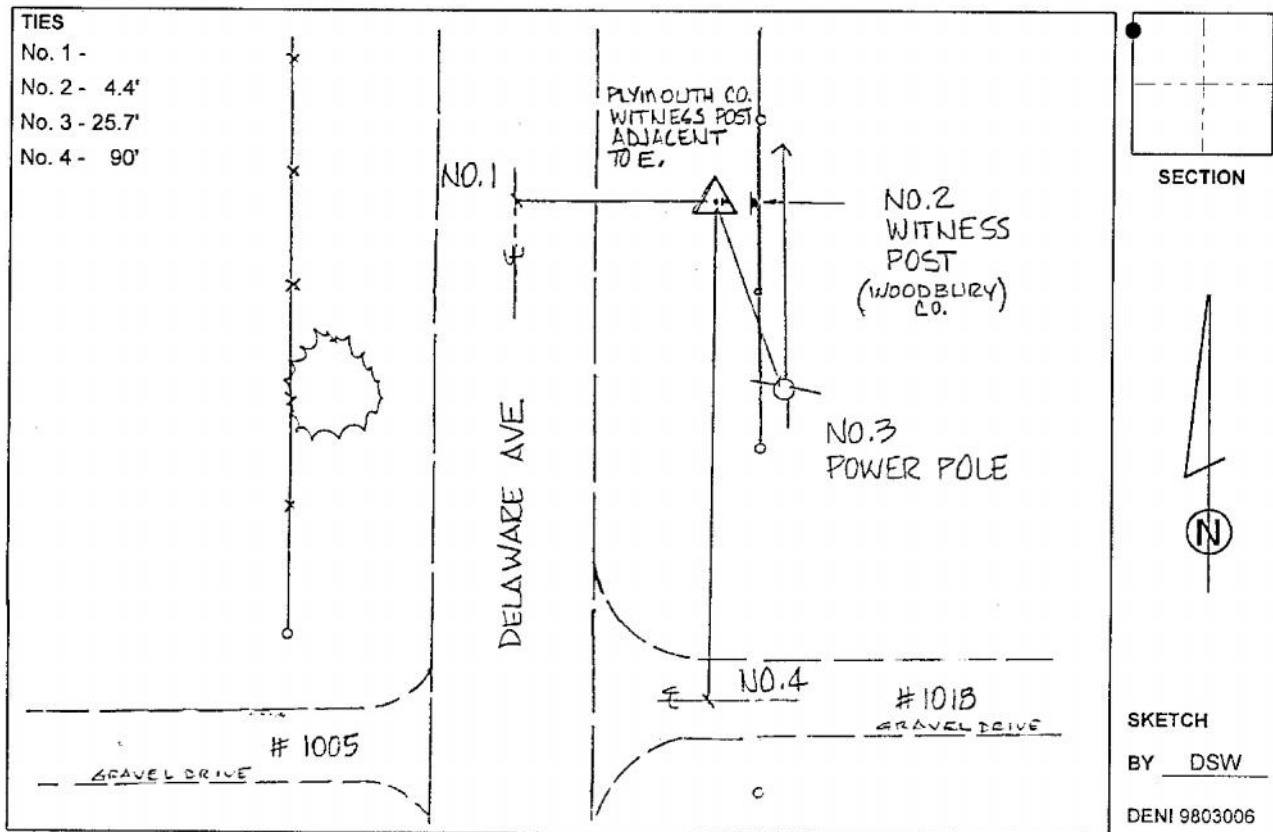
IaRCS Zone 4 Northing: **8612897.961sft**

Easting: **14128024.217sft**

Mapping Angle: **-00° 56' 00"**

Combination Scale Factor: **0.999988134**

**Monument Type:** 2-1/2" aluminum cap on aluminum rod in 5" diameter PVC pipe with aluminum access cover.



*This document was prepared by Dan Corbin, Inc. on March 6, 2015 for Woodbury County, Iowa.*