

**Woodbury County, Iowa**

Horizontal Datum: **NAD 83(2011)** - Vertical Datum: **NAVD 1988**

Iowa State Plane North Zone (1401)

Iowa Regional Coordinate System Zone 4 Sioux City-Iowa Falls LCC

US Survey Feet

**2015**

Point Name: **72**

GPS No. (1998): **8071**

**Designation:** 95-072 Plymouth County GPS Control Pt. (Set by ASI in 1995)

NAD 83(NA2011) Latitude: **N42°33'41.31474"**

Longitude: **W96°09'16.28681"**

NAVD 88 Ortho Height: **1293.050sft**

Ellip. Ht: **1205.885sft**

**Geoid09**

Iowa North Zone (1401) Northing: **3678885.896sft**

Easting: **4206231.644sft**

Mapping Angle: **-1°47'57"**

Combination Scale Factor: **0.999889545**

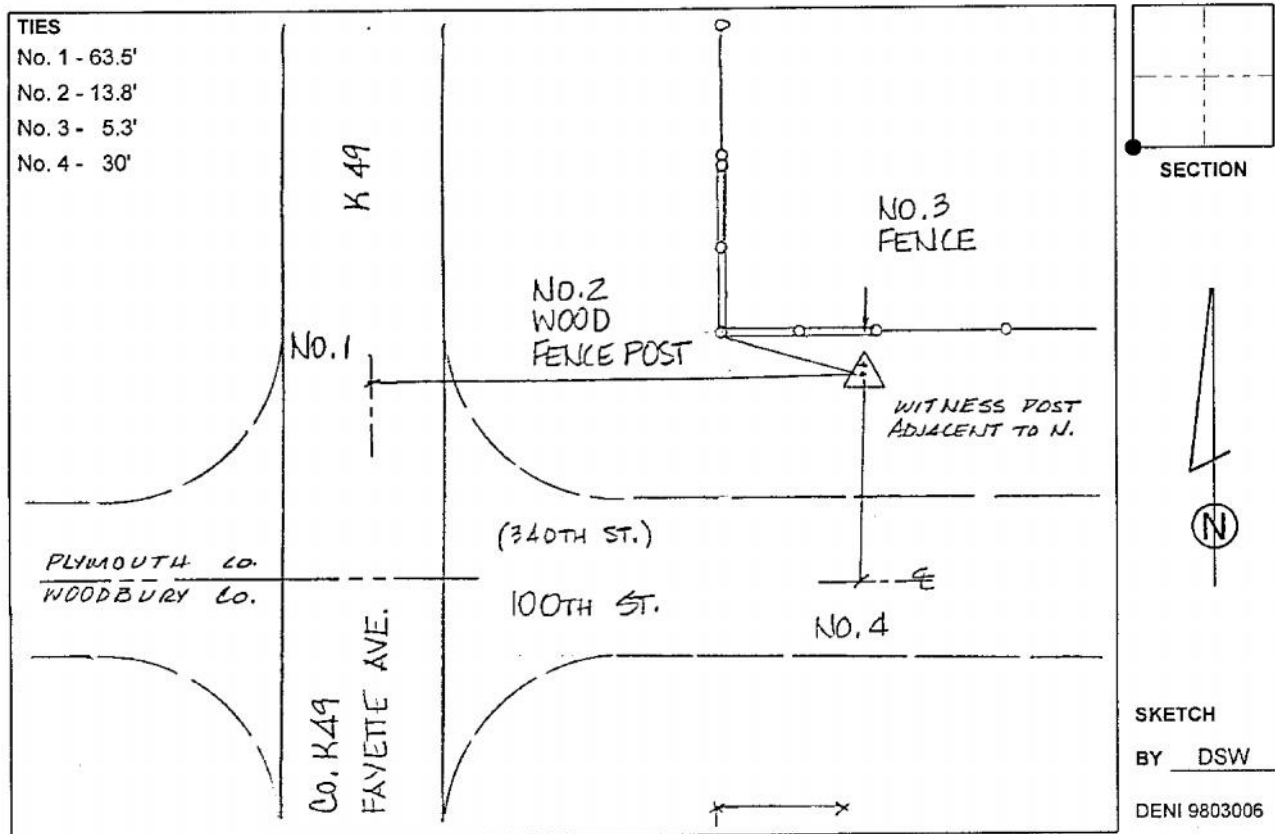
IaRCS Zone 4 Northing: **8613031.538sft**

Easting: **14144047.203sft**

Mapping Angle: **-00° 53' 35"**

Combination Scale Factor: **0.999987372**

**Monument Type:** 2-1/2" aluminum cap on aluminum rod in 5" diameter PVC pipe with aluminum access cover.



*This document was prepared by Dan Corbin, Inc. on March 6, 2015 for Woodbury County, Iowa.*