

Woodbury County, Iowa

Horizontal Datum: **NAD 83(2011)** - Vertical Datum: **NAVD 1988**

Iowa State Plane North Zone (1401)

Iowa Regional Coordinate System Zone 4 Sioux City-Iowa Falls LCC

US Survey Feet

2015

Point Name: **81**

GPS No. (1998): **8070**

Designation: 95-081 Plymouth County GPS Control Pt. (Set by ASI in 1995)

NAD 83(NA2011) Latitude: **N42°33'41.00258"**

Longitude: **W96°06'01.23355"**

NAVD 88 Ortho Height: **1276.090sft**

Ellip. Ht: **1188.656sft**

Geoid09

Iowa North Zone (1401) Northing: **3678400.727sft**

Easting: **4220820.253sft**

Mapping Angle: **-1°45'45"**

Combination Scale Factor: **0.999890369**

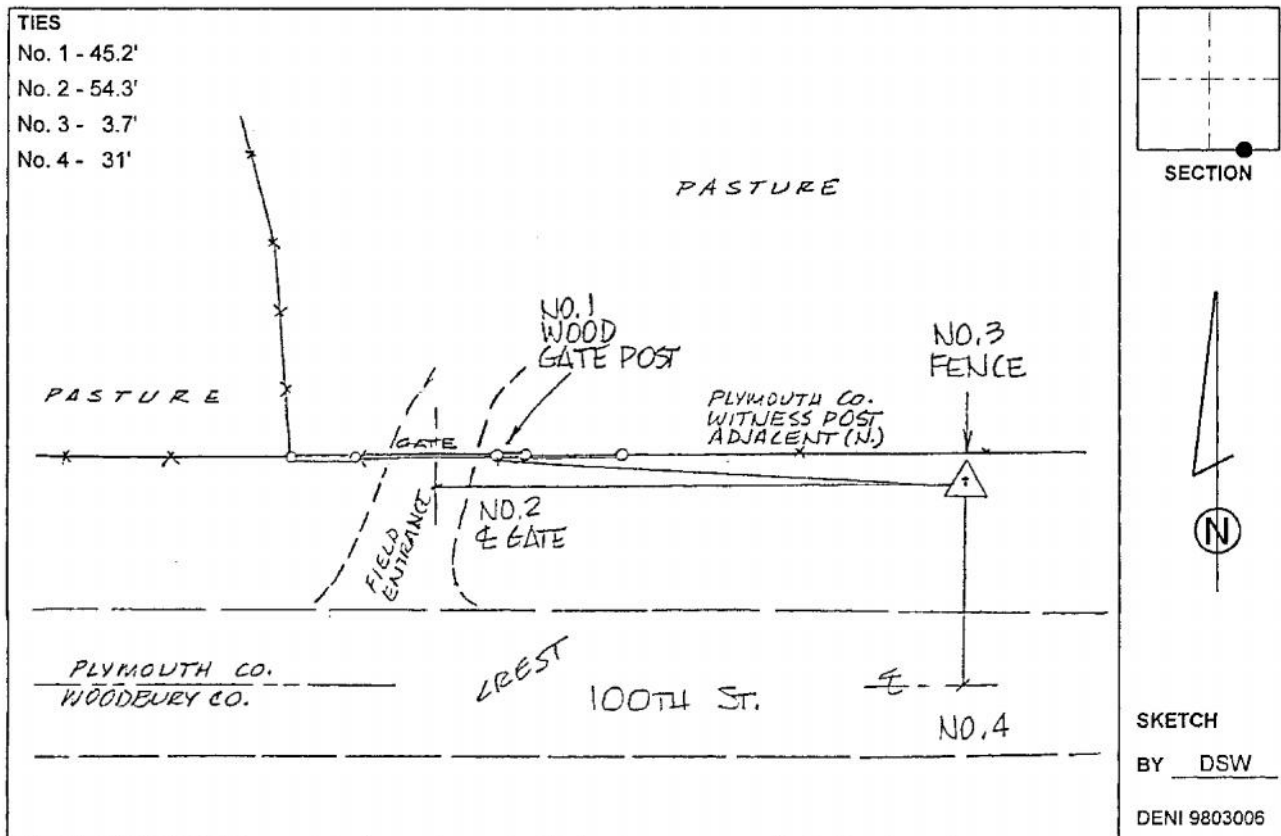
IaRCS Zone 4 Northing: **8612777.052sft**

Easting: **14158643.090sft**

Mapping Angle: **-00° 51' 23"**

Combination Scale Factor: **0.999988196**

Monument Type: 2-1/2" aluminum cap on aluminum rod in 5" diameter PVC pipe with aluminum access cover.



This document was prepared by Dan Corbin, Inc. on March 6, 2015 for Woodbury County, Iowa.