

**Woodbury County, Iowa**

Horizontal Datum: **NAD 83(2011)** - Vertical Datum: **NAVD 1988**

Iowa State Plane North Zone (1401)

Iowa Regional Coordinate System Zone 4 Sioux City-Iowa Falls LCC

US Survey Feet

**2015**

Point Name: **99**

GPS No. (1998): **8052**

**Designation:** 95-099 Plymouth County GPS Control Pt. (Set by ASI in 1995)

NAD 83(NA2011) Latitude: **N42°33'49.43437"**

Longitude: **W95°58'41.63960"**

NAVD 88 Ortho Height: **1349.540sft**

Ellip. Ht: **1261.250sft**

**Geoid09**

Iowa North Zone (1401) Northing: **3678265.949sft**

Easting: **4253727.081sft**

Mapping Angle: **-1°40'47"**

Combination Scale Factor: **0.999886832**

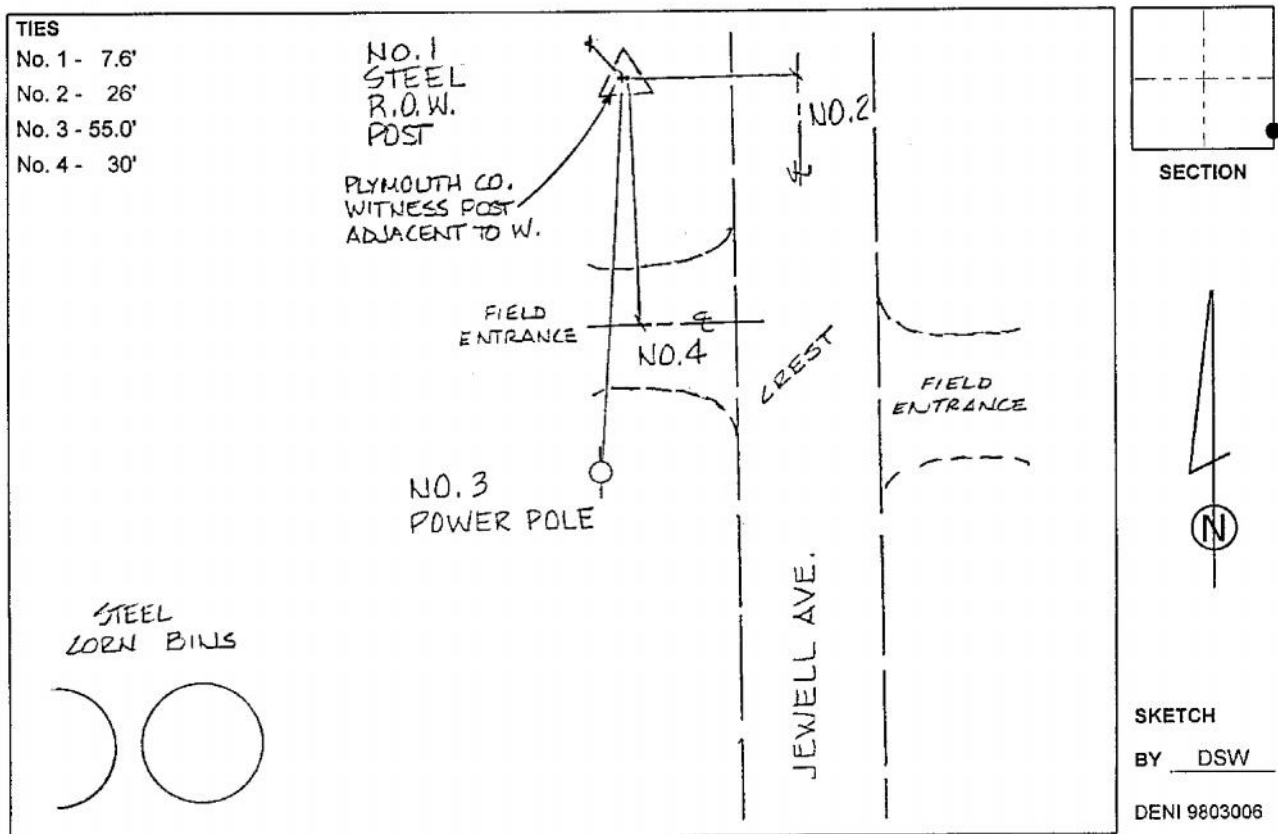
IaRCS Zone 4 Northing: **8613162.503sft**

Easting: **14191551.164sft**

Mapping Angle: **-00° 46' 26"**

Combination Scale Factor: **0.999984740**

**Monument Type:** 2-1/2" aluminum cap on aluminum rod in 5" diameter PVC pipe with aluminum access cover.



*This document was prepared by Dan Corbin, Inc. on March 6, 2015 for Woodbury County, Iowa.*