

Woodbury County, Iowa

Horizontal Datum: **NAD 83(2011)** - Vertical Datum: **NAVD 1988**

Iowa State Plane North Zone (1401)

Iowa Regional Coordinate System Zone 4 Sioux City-Iowa Falls LCC

US Survey Feet

2015

Point Name: **108**

GPS No. (1998): **8035**

Designation: 95-108 Plymouth County GPS Control Pt. (Set by ASI in 1995)

NAD 83(NA2011) Latitude: **N42°33'38.85481"**

Longitude: **W95°55'06.72174"**

NAVD 88 Ortho Height: **1413.750sft**

Ellip. Ht: **1325.036sft**

Geoid09

Iowa North Zone (1401) Northing: **3676729.701sft**

Easting: **4269772.299sft**

Mapping Angle: **-1°38'21"**

Combination Scale Factor: **0.999883883**

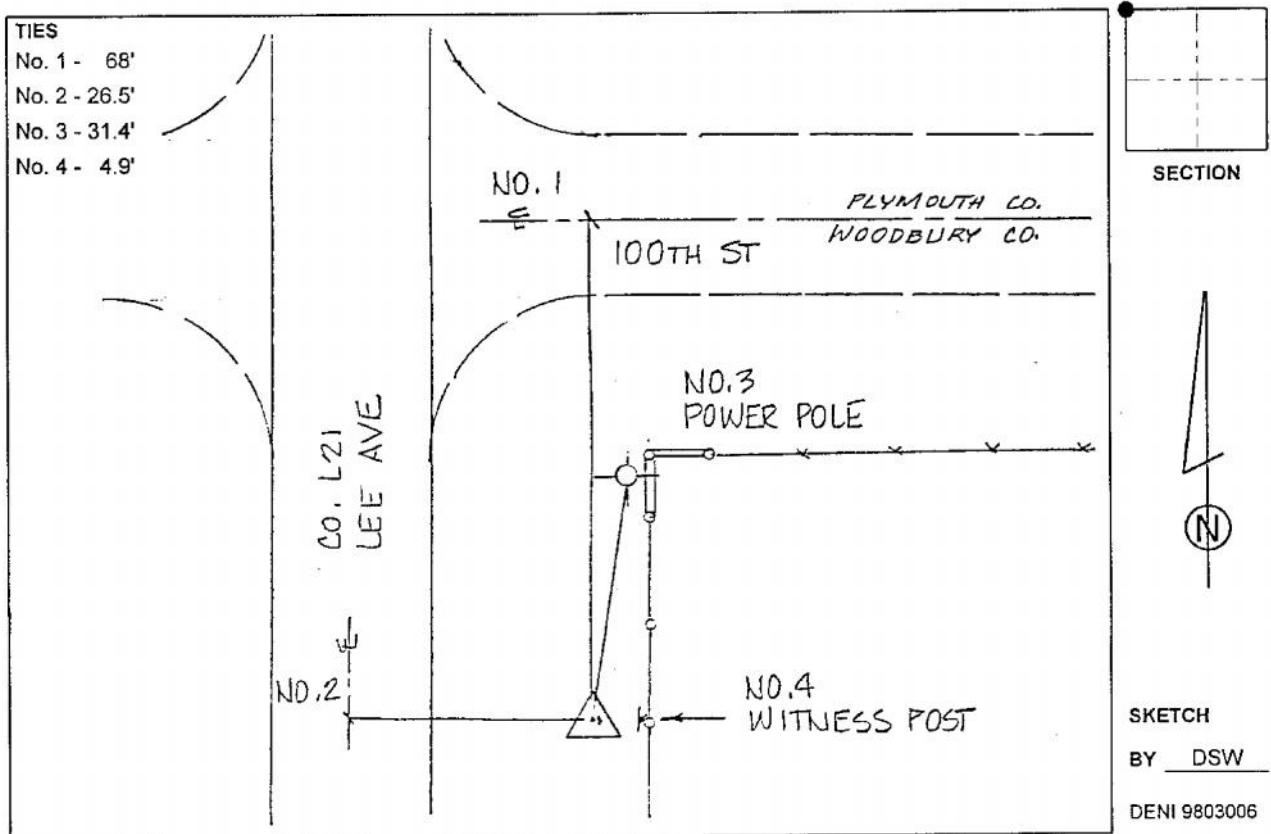
IaRCS Zone 4 Northing: **8611879.912sft**

Easting: **14207620.235sft**

Mapping Angle: **-00° 44' 01"**

Combination Scale Factor: **0.999981660**

Monument Type: 2-1/2" aluminum cap on aluminum rod in 5" diameter PVC pipe with aluminum access cover.



This document was prepared by Dan Corbin, Inc. on March 6, 2015 for Woodbury County, Iowa.