

Woodbury County, Iowa

Horizontal Datum: **NAD 83(2011)** - Vertical Datum: **NAVD 1988**

Iowa State Plane North Zone (1401)

Iowa Regional Coordinate System Zone 4 Sioux City-Iowa Falls LCC

US Survey Feet

2015

Point Name: **117**

GPS No. (1998): **8034**

Designation: 95-117 Plymouth County GPS Control Pt. (Set by ASI in 1995)

NAD 83(NA2011) Latitude: **N42°33'37.41826"**

Longitude: **W95°51'36.40695"**

NAVD 88 Ortho Height: **1316.180sft**

Ellip. Ht: **1227.060sft**

Geoid09

Iowa North Zone (1401) Northing: **3676139.566sft**

Easting: **4285500.839sft**

Mapping Angle: **-1°35'58"**

Combination Scale Factor: **0.999888570**

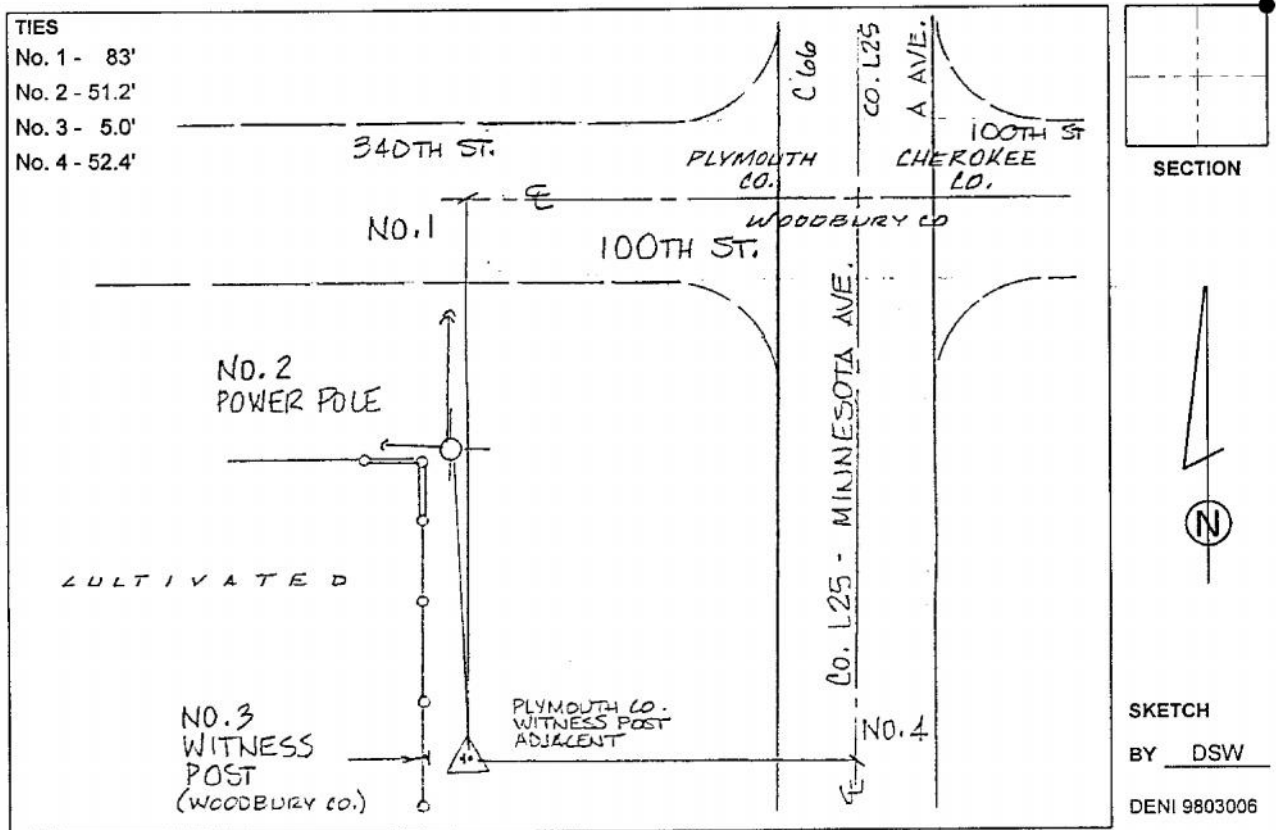
IaRCS Zone 4 Northing: **8611538.375sft**

Easting: **14223357.678sft**

Mapping Angle: **-00° 41' 39"**

Combination Scale Factor: **0.999986349**

Monument Type: 2-1/2" aluminum cap on aluminum rod in 5" diameter PVC pipe with aluminum access cover.



This document was prepared by Dan Corbin, Inc. on March 6, 2015 for Woodbury County, Iowa.