

**Woodbury County, Iowa**

Horizontal Datum: **NAD 83(2011)** - Vertical Datum: **NAVD 1988**

Iowa State Plane North Zone (1401)

Iowa Regional Coordinate System Zone 4 Sioux City-Iowa Falls LCC

US Survey Feet

**2015**

Point Name: **1045 (Replaces 8106)**  
(1998): **N/A**

GPS No.

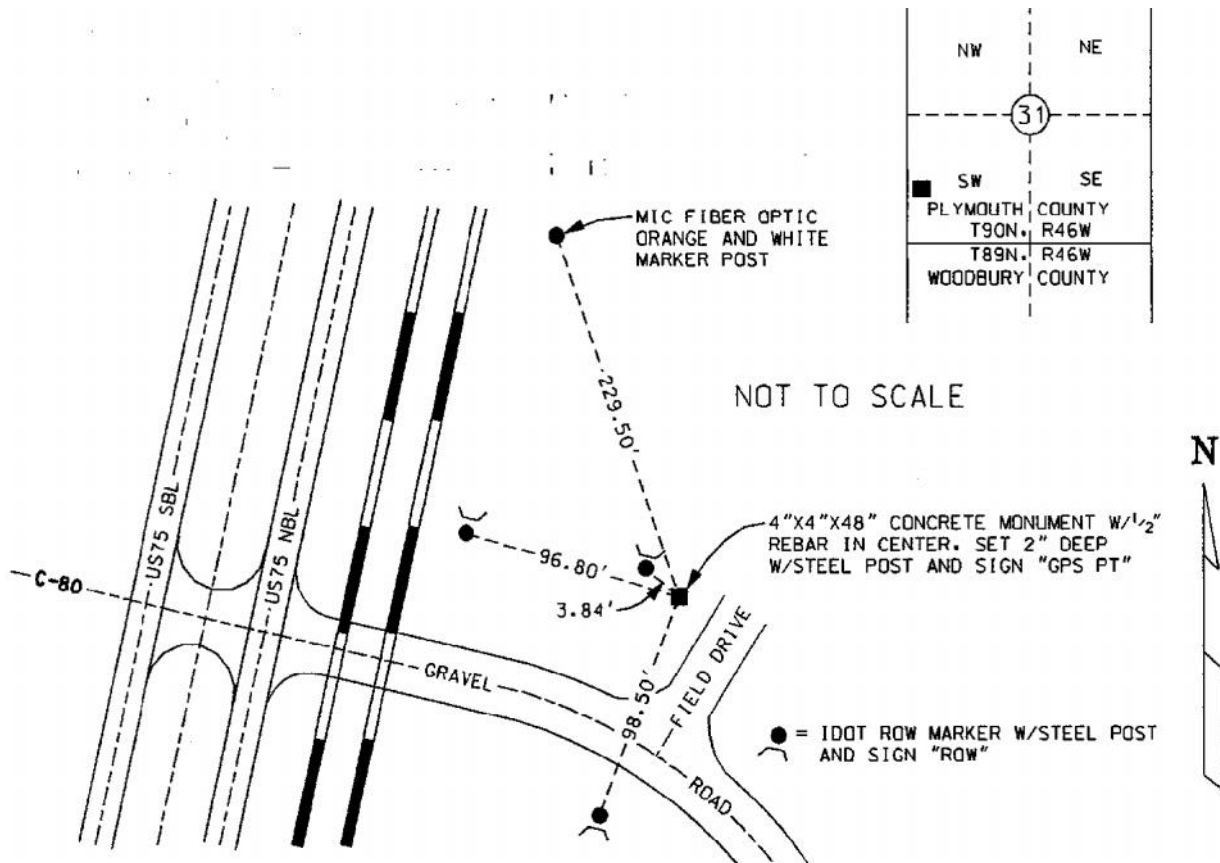
**Designation:** 4"x4"x48" concrete monument set by IDOT

NAD 83(NA2011) Latitude: **N42°33'49.40837"** Longitude: **W96°19'38.10423"**  
NAVD 88 Ortho Height: **1115.872sft** Ellip. Ht: **1029.659sft** Geoid09

Iowa North Zone (1401) Northing: **3681213.175sft** Easting: **4159750.373sft**  
Mapping Angle: **-1°54'58"** Combination Scale Factor: **0.999897880**

IaRCS Zone 4 Northing: **8614623.647sft** Easting: **14097530.378sft**  
Mapping Angle: **-01° 00' 36"** Combination Scale Factor: **0.999995830**

**Monument Type:** 4"x4"x48" concrete monument with a 1/2" rebar in center. The monument was set 2" below ground surface.



*This document was prepared by Dan Corbin, Inc. on March 6, 2015 for Woodbury County, Iowa.*