

Woodbury County, Iowa

Horizontal Datum: **NAD 83(2011)** - Vertical Datum: **NAVD 1988**

Iowa State Plane North Zone (1401)

Iowa Regional Coordinate System Zone 4 Sioux City-Iowa Falls LCC

US Survey Feet

2015

Point Name: **8001**

GPS No. (1998): **8001**

Designation: 884201 1 (Set by DENI Associates in 1998)

NAD 83(NA2011) Latitude: **N42°28'23.26310"**

Longitude: **W95°40'09.88462"**

NAVD 88 Ortho Height: **1320.100sft**

Ellip. Ht: **1229.426sft**

Geoid09

Iowa North Zone (1401) Northing: **3642971.992sft**

Easting: **4336042.544sft**

Mapping Angle: **-1°28'13"**

Combination Scale Factor: **0.999892447**

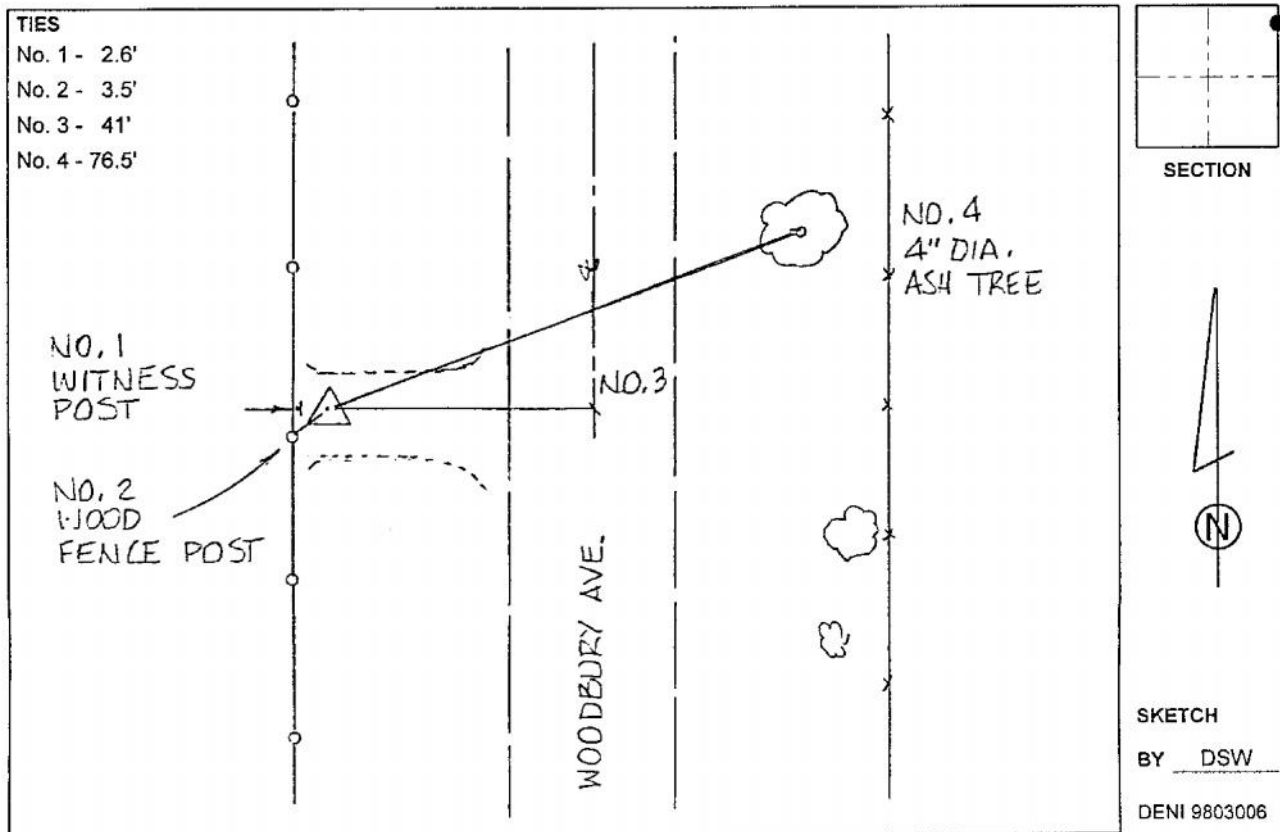
IaRCS Zone 4 Northing: **8579170.347sft**

Easting: **14274422.011sft**

Mapping Angle: **-00° 33' 55"**

Combination Scale Factor: **0.999986673**

Monument Type: 3-1/4" aluminum cap on aluminum rod in 6" PVC pipe with aluminum access cover.



This document was prepared by Dan Corbin, Inc. on March 6, 2015 for Woodbury County, Iowa.